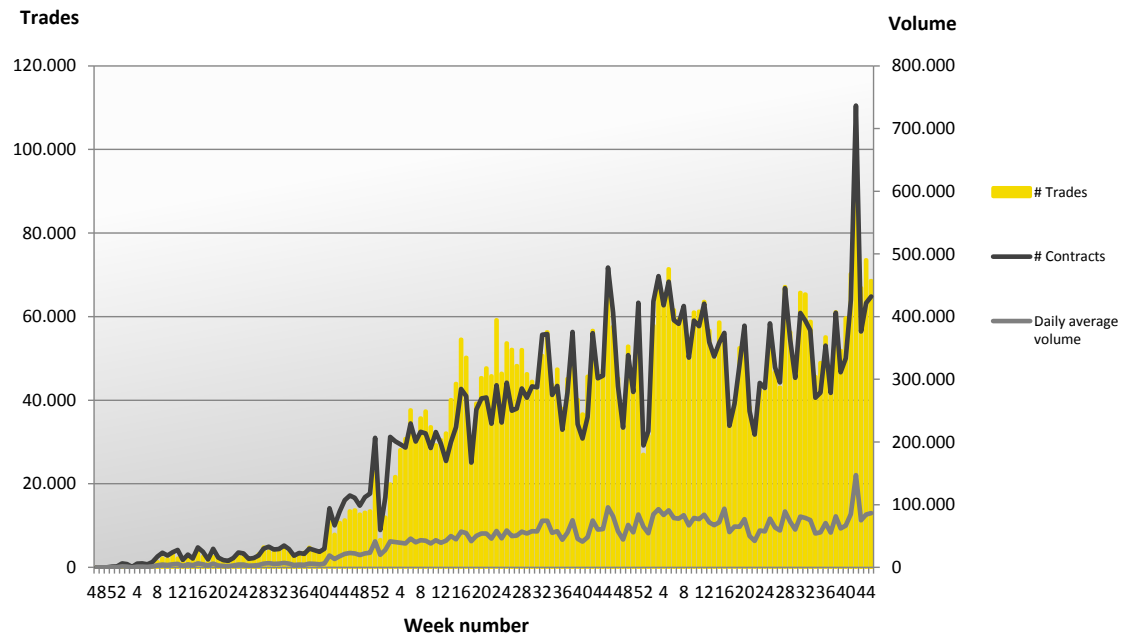
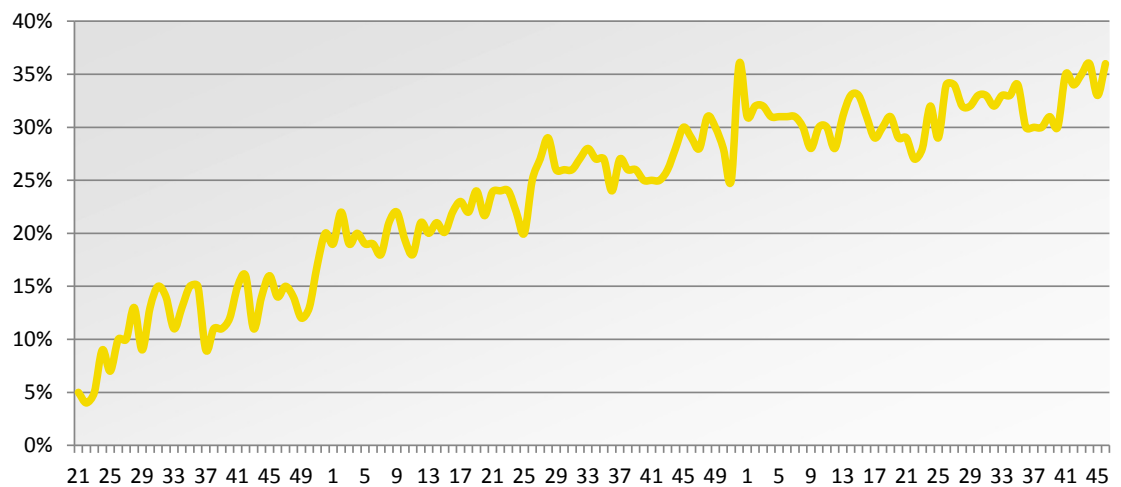


Week 46 2014 – Derivatives

Volume and transactions since launch



TOM MTF market share vs NYSE Liffe (TOM MTF covered classes)



Volume and market share per class

| Index options | # TOM MTF | # Euronext | Total | % TOM MTF | % Euronext |
|---|----------------|----------------|----------------|------------|------------|
| XNL (Monthly TOM Options based on AEX index) | 69.746 | 130.647 | 200.393 | 35% | 65% |
| XNL01-31 (Daily TOM Options based on AEX index) | 24.510 | 36.484 | 60.994 | 40% | 60% |
| XNLW1-5 (Weekly TOM Options based on AEX index) | 26.941 | 34.017 | 60.958 | 44% | 56% |
| MXNL (Mini TOM Options based on AEX index) | 2.728 | 494 | 3.222 | 85% | 15% |
| Total index options | 123.925 | 201.642 | 325.567 | 38% | 62% |

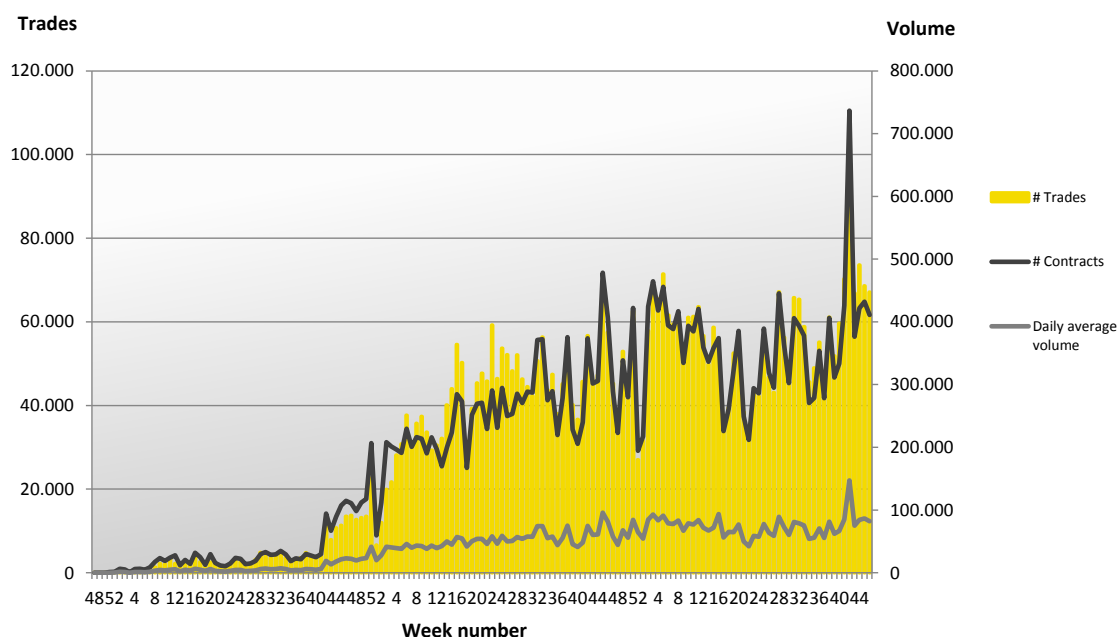
| Equity options (monthly classes) | # TOM MTF | # Euronext | Total | % TOM MTF | % Euronext |
|----------------------------------|-----------|------------|---------|-----------|------------|
| Aalberts Industries (AAIT) | 2.293 | 2.050 | 4.343 | 53% | 47% |
| Ahold (AHT) | 8.780 | 18.280 | 27.060 | 32% | 68% |
| AEGON (AGT) | 28.338 | 50.778 | 79.116 | 36% | 64% |
| Akzo Nobel (AKZT) | 3.660 | 6.989 | 10.649 | 34% | 66% |
| Air France / KLM (AFAT) | 862 | 3.899 | 4.761 | 18% | 82% |
| Ageas (AGAT/AGXT) | 800 | 1.059 | 1.859 | 43% | 57% |
| AMG (AMGT) | 413 | 1.267 | 1.680 | 25% | 75% |
| Aperam (APT) | 1.893 | 3.255 | 5.148 | 37% | 63% |
| Arcadis (ARCT) | 483 | 365 | 848 | 57% | 43% |
| ArcelorMittal (MTT) | 22.084 | 26.580 | 48.664 | 45% | 55% |
| ASM International (ASMT / ASXT) | 1.655 | 1.884 | 3.539 | 47% | 53% |
| ASML Holding (ASLT/ALOT) | 10.311 | 22.426 | 32.737 | 31% | 69% |
| BAM Groep (BAMT) | 7.286 | 8.482 | 15.768 | 46% | 54% |
| BinckBank (BCKT) | 869 | 792 | 1.661 | 52% | 48% |
| Brunel International (BIT) | 610 | 470 | 1.080 | 56% | 44% |
| Boskalis Westminster (BOST) | 3.281 | 4.981 | 8.262 | 40% | 60% |
| Corio (CIOT) | 107 | 2.703 | 2.810 | 4% | 96% |
| CSM (CSMT/CSOT) | 2.557 | 3.819 | 6.376 | 40% | 60% |
| Delta Lloyd (DLT) | 1.412 | 5.978 | 7.390 | 19% | 81% |
| DSM (DSMT) | 4.626 | 7.443 | 12.069 | 38% | 62% |
| Fugro (FUOT / FURT) | 40.677 | 69.847 | 110.524 | 37% | 63% |
| Gemalto (GMIT) | 1.339 | 3.415 | 4.754 | 28% | 72% |
| Heineken (HEIT) | 1.653 | 2.861 | 4.514 | 37% | 63% |
| Heijmans (HEYT) | 917 | 1.108 | 2.025 | 45% | 55% |
| ING Groep (INGT) | 27.661 | 65.253 | 92.914 | 30% | 70% |
| KPN (KPNT/ KPOT) | 3.373 | 9.242 | 12.615 | 27% | 73% |
| Nieuwe Steen investments (NSIT) | 73 | 528 | 601 | 12% | 88% |
| NN Group (NNT) | 274 | 980 | 1.254 | 22% | 78% |
| Nutreco Holding (NUOT) | 4.882 | 14.127 | 19.009 | 26% | 74% |
| Ordina (ORDT) | 1.044 | 248 | 1.292 | 81% | 19% |
| Philips (PHIT) | 9.512 | 20.089 | 29.601 | 32% | 68% |
| PostNL (PNLT) | 1.627 | 2.839 | 4.466 | 36% | 64% |
| Randstad (RNDT) | 3.047 | 3.345 | 6.392 | 48% | 52% |
| Reed Elsevier (RENT) | 772 | 2.167 | 2.939 | 26% | 74% |
| Royal Imtech (IMT/IMMT) | 1.315 | 1.313 | 2.628 | 50% | 50% |
| Royal Dutch Shell (RDT) | 31.075 | 47.137 | 78.212 | 40% | 60% |
| SBM Offshore (SBMT/SBOT) | 30.984 | 73.100 | 104.084 | 30% | 70% |
| Koninklijke Ten Cate (TCTT) | 584 | 1.287 | 1.871 | 31% | 69% |
| TKH Group (TKGT) | 562 | 582 | 1.144 | 49% | 51% |
| TNT Express (TNET) | 411 | 1.327 | 1.738 | 24% | 76% |
| TomTom (TTMT) | 5.199 | 6.517 | 11.716 | 44% | 56% |
| Unilever (UNAT) | 5.828 | 12.516 | 18.344 | 32% | 68% |
| USG People (USGT) | 3.323 | 3.190 | 6.513 | 51% | 49% |
| Unibail-Rodamco (UBLT) | 382 | 973 | 1.355 | 28% | 72% |
| Wessanen (WEST) | 3.483 | 4.134 | 7.617 | 46% | 54% |
| Vopak (VPKT) | 1.358 | 2.974 | 4.332 | 31% | 69% |
| Wereldhave (WHVT) | 234 | 575 | 809 | 29% | 71% |
| Wolters Kluwer (WKLT) | 698 | 1.775 | 2.473 | 28% | 72% |

| Equity options (weekly classes) | # TOM MTF | # Euronext | Total | % TOM MTF | % Euronext |
|-----------------------------------|----------------|----------------|----------------|------------|------------|
| Aegon (Weekly series) | 22 | 12 | 34 | 65% | 35% |
| ArcelorMittal (Weekly series) | 431 | 278 | 709 | 61% | 39% |
| ING (Weekly series) | 1.252 | 458 | 1.710 | 73% | 27% |
| Philips (Weekly series) | 147 | 26 | 173 | 85% | 15% |
| Royal Dutch Shell (Weekly series) | 678 | 849 | 1.527 | 44% | 56% |
| Total equity options | 287.137 | 528.572 | 815.709 | 35% | 65% |

| | | | | | |
|----------------------|----------------|----------------|------------------|------------|------------|
| Total options | 411.062 | 730.214 | 1.141.276 | 36% | 64% |
|----------------------|----------------|----------------|------------------|------------|------------|

Week 46 2014 – Cash

1 year rolling turnover and volume



Statistics Week 46 2014

| Date | # Transactions | Turnover | Volume | Average value per transaction |
|------------|----------------|---------------------|------------------|-------------------------------|
| 10-11-2014 | 2.826 | € 15.144.377 | 998.150 | € 5.359 |
| 11-11-2014 | 2.374 | € 12.570.408 | 959.112 | € 5.295 |
| 12-11-2014 | 2.006 | € 13.331.111 | 1.059.633 | € 6.646 |
| 13-11-2014 | 1.465 | € 12.371.583 | 1.082.725 | € 8.445 |
| 14-11-2014 | 1.662 | € 11.185.704 | 780.371 | € 6.730 |
| | 10.333 | € 64.603.183 | 4.879.991 | |

Contact
TOM MTF
 Barbara Strozzilaan 310-322
 1083 HN Amsterdam

+31 20 719 5030
www.tommtf.eu
info@tomgroup.eu

Week 46 statistics per share



Update

WEEK 46

14 NOVEMBER 2014

| ISIN | Euronext | TOM | Total | TOM MTF market share | ISIN | Euronext | TOM | Total | TOM MTF market share |
|---------------|------------|-----------|------------|----------------------|----------------|------------|--------|------------|----------------------|
| NL0000927249 | 72.874 | 22.375 | 95.249 | 23.5% | NL0000395903 | 4.358.225 | 2.659 | 4.360.884 | 0.1% |
| IF00B0M62Y33 | 253.752 | 41.411 | 295.163 | 14.0% | FR0000124141 | 8.661.536 | 5.274 | 8.666.810 | 0.1% |
| NL00000352565 | 27.441.593 | 821.065 | 28.262.658 | 2.9% | FR0000125007 | 6.637.522 | 3.671 | 6.641.193 | 0.1% |
| NL00000852564 | 858.082 | 18.097 | 876.179 | 2.1% | BE0003565737 | 5.952.030 | 2.961 | 5.954.991 | 0.0% |
| NL00000354488 | 16.846.952 | 316.092 | 17.163.044 | 1.8% | FR0000133308 | 51.742.298 | 22.181 | 51.764.479 | 0.0% |
| NL00000852580 | 2.635.959 | 48.250 | 2.684.209 | 1.8% | FR0000120644 | 6.795.649 | 2.740 | 6.798.389 | 0.0% |
| NL0010886891 | 2.621.792 | 40.532 | 2.662.324 | 1.5% | FR0010220475 | 8.476.905 | 3.372 | 8.480.277 | 0.0% |
| NL00000360618 | 3.080.650 | 45.917 | 3.126.567 | 1.5% | FR0000121014 | 3.153.376 | 1.092 | 3.154.468 | 0.0% |
| NL00000930709 | 30.300.457 | 449.755 | 30.750.212 | 1.5% | FR0000120578 | 15.403.158 | 4.919 | 15.408.077 | 0.0% |
| NL00000303600 | 52.857.294 | 711.574 | 53.568.868 | 1.3% | FR0000131104 | 20.921.091 | 6.657 | 20.927.748 | 0.0% |
| NL00010395208 | 78.649.873 | 1.055.407 | 79.705.280 | 1.3% | BE0003880407 | 1.596.893 | 503 | 1.597.396 | 0.0% |
| NL00009739416 | 5.492.000 | 54.899 | 5.546.899 | 1.0% | FR0000120321 | 3.855.026 | 1.068 | 3.856.094 | 0.0% |
| NL00006237562 | 13.043.963 | 14.037 | 2.219.695 | 0.6% | FR0000120628 | 32.292.237 | 8.644 | 32.300.881 | 0.0% |
| NL00000090982 | 492.900 | 81.872 | 13.125.835 | 0.6% | FR0000124711 | 1.201.468 | 318 | 1.201.786 | 0.0% |
| FR0000045072 | 78.949.971 | 2.531 | 495.431 | 0.5% | FR0000120172 | 10.038.094 | 2.552 | 10.040.646 | 0.0% |
| FR0000031122 | 4.799.095 | 385.503 | 79.335.474 | 0.5% | FR0000120271 | 24.527.276 | 6.230 | 24.533.506 | 0.0% |
| FR0000045072 | 45.257.870 | 197.713 | 45.455.583 | 0.4% | FR0000120073 | 2.788.266 | 706 | 2.788.972 | 0.0% |
| FR0000031122 | 13.996.664 | 48.234 | 14.044.888 | 0.3% | FR0000120848 | 3.039.848 | 670 | 3.040.518 | 0.0% |
| FR0000099538 | 23.588.069 | 78.819 | 23.666.888 | 0.3% | FR0000130577 | 25.117.341 | 4.896 | 25.122.237 | 0.0% |
| nL0010672325 | 16.843.978 | 56.450 | 17.987.186 | 0.3% | FR0000127771 | 3.229.463 | 584 | 3.230.047 | 0.0% |
| FR0000045072 | 20.048.940 | 50.648 | 20.099.588 | 0.3% | FR0000121667 | 19.262.154 | 3.068 | 19.265.222 | 0.0% |
| FR00000314006 | 47.829.165 | 100.717 | 47.929.882 | 0.2% | FR0000125486 | 1.992.512 | 231 | 1.992.743 | 0.0% |
| FR00000131906 | 3.265.250 | 6.682 | 3.271.932 | 0.2% | FR0000121972 | 9.122.057 | 1.036 | 9.123.093 | 0.0% |
| FR00000144495 | 1.911.209 | 3.322 | 1.914.531 | 0.2% | BE0003793107 | 6.279.829 | 412 | 6.280.241 | 0.0% |
| FR0000120809 | 4.096.899 | 6.480 | 4.103.379 | 0.2% | FR0000120404 | 6.213.615 | 404 | 6.214.019 | 0.0% |
| FR0000120809 | 9.133.006 | 14.283 | 9.147.289 | 0.2% | FR0000120503 | 4.148.265 | 200 | 4.148.465 | 0.0% |
| FR0000120809 | 23.235.284 | 25.326 | 23.260.610 | 0.1% | FR0000120503 | 966.618 | 40 | 966.658 | 0.0% |
| FR0000120809 | 2.514.607 | 2.241 | 2.516.848 | 0.1% | NL0000334178 | 6.711.691 | 9 | 6.711.700 | 0.0% |
| FR0000120809 | 5.799.002 | 4.949 | 5.803.951 | 0.1% | NL0000888691 | 569.021 | - | 569.021 | 0.0% |
| FR0000120809 | 3.046.130 | 2.534 | 3.048.664 | 0.1% | NL0001076944 | 497.668 | - | 497.668 | 0.0% |
| FR0000120809 | 2.536.654 | 1.788 | 2.538.442 | 0.1% | NL0000288967 | 930.566 | - | 930.566 | 0.0% |
| FR0000120809 | 4.047.244 | 2.628 | 4.049.872 | 0.1% | FR000010583399 | 1.120.144 | - | 1.120.144 | 0.0% |
| FR0000120809 | 2.706.609 | 1.676 | 2.708.285 | 0.1% | NL0000288876 | 285.504 | - | 285.504 | 0.0% |
| | | | | | NL00009294552 | 602.595 | - | 602.595 | 0.0% |
| | | | | | NL0000375749 | 296.194 | - | 296.194 | 0.0% |