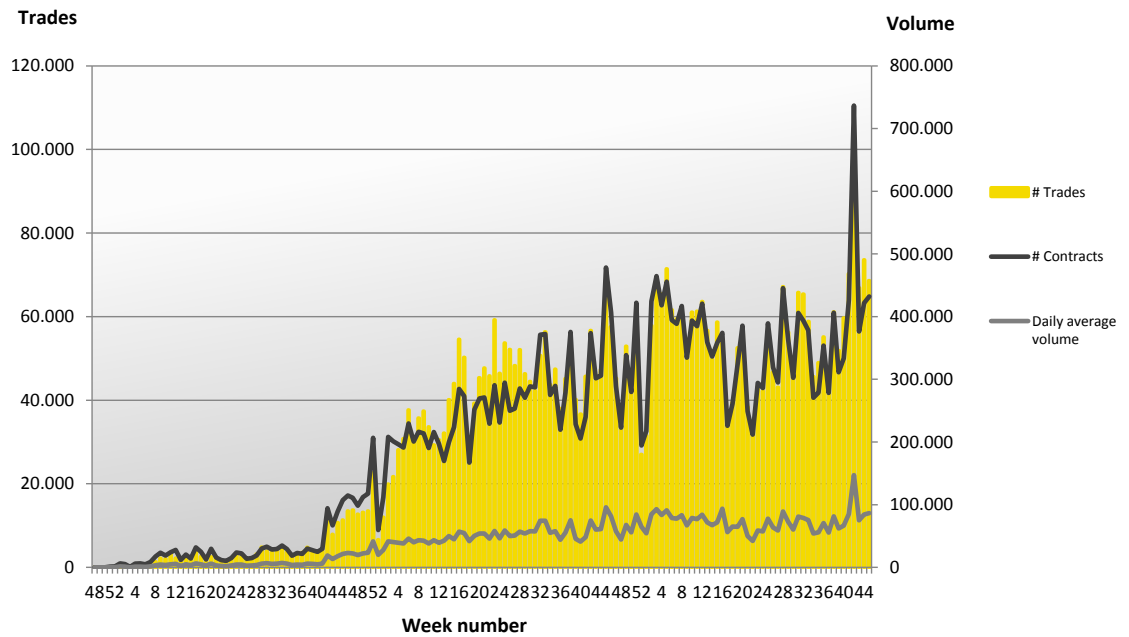
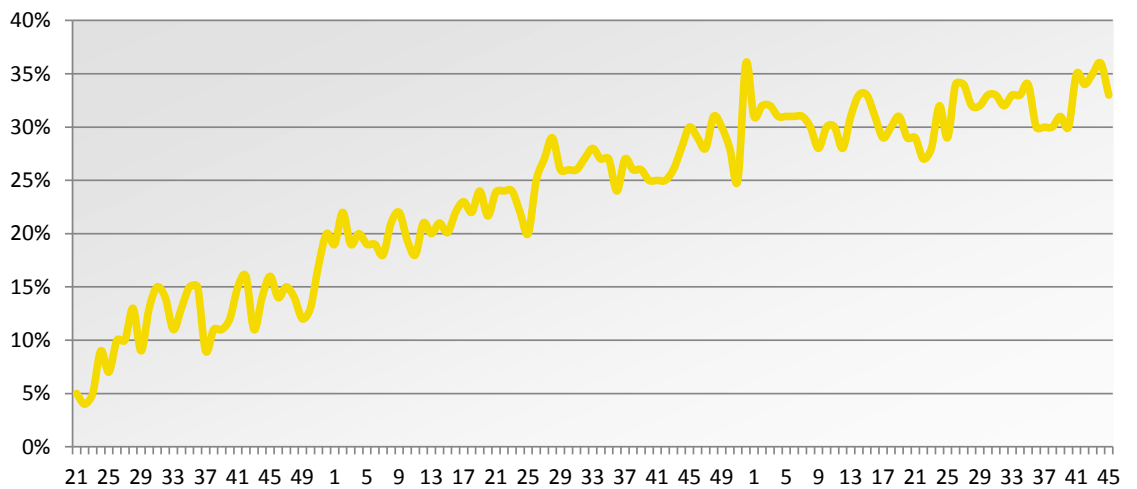


Week 45 2014 – Derivatives

Volume and transactions since launch



TOM MTF market share vs NYSE Liffe (TOM MTF covered classes)



Volume and market share per class

Index options	# TOM MTF	# Euronext	Total	% TOM MTF	% Euronext
XNL (Monthly TOM Options based on AEX index)	87.725	169.623	257.348	34%	66%
XNL01-31 (Daily TOM Options based on AEX index)	26.369	39.583	65.952	40%	60%
XNLW1-5 (Weekly TOM Options based on AEX index)	25.661	53.260	78.921	33%	67%
MXNL (Mini TOM Options based on AEX index)	2.254	1.009	3.263	69%	31%
Total index options	142.009	263.475	405.484	35%	65%

Equity options (monthly classes)	# TOM MTF	# Euronext	Total	% TOM MTF	% Euronext
Aalberts Industries (AAIT)	2.057	2.524	4.581	45%	55%
Ahold (AHT)	6.386	10.212	16.598	38%	62%
AEGON (AGT)	8.455	13.472	21.927	39%	61%
Akzo Nobel (AKZT)	3.931	7.105	11.036	36%	64%
Air France / KLM (AFAT)	1.903	7.990	9.893	19%	81%
Ageas (AGAT/AGXT)	2.052	2.630	4.682	44%	56%
AMG (AMGT)	744	2.027	2.771	27%	73%
Aperam (APT)	3.164	5.635	8.799	36%	64%
Arcadis (ARCT)	921	1.186	2.107	44%	56%
ArcelorMittal (MTT)	23.207	53.271	76.478	30%	70%
ASM International (ASMT / ASXT)	3.718	5.072	8.790	42%	58%
ASML Holding (ASLT/ALOT)	12.665	21.119	33.784	37%	63%
BAM Groep (BAMT)	8.743	30.985	39.728	22%	78%
BinckBank (BCKT)	769	522	1.291	60%	40%
Brunel International (BIT)	849	1.478	2.327	36%	64%
Boskalis Westminster (BOST)	527	1.687	2.214	24%	76%
Corio (CIOT)	744	790	1.534	49%	51%
CSM (CSMT/CSOT)	1.803	4.576	6.379	28%	72%
Delta Lloyd (DLT)	2.672	4.238	6.910	39%	61%
DSM (DSMT)	6.564	16.397	22.961	29%	71%
Fugro (FUOT / FURT)	34.987	68.065	103.052	34%	66%
Geralto (GMIT)	1.030	2.155	3.185	32%	68%
Heineken (HEIT)	1.273	2.871	4.144	31%	69%
Heijmans (HEYT)	3.410	2.134	5.544	62%	38%
ING Groep (INGT)	54.875	115.608	170.483	32%	68%
KPN (KPNT/ KPOT)	2.247	6.026	8.273	27%	73%
Nieuwe Steen investments (NSIT)	30	17	47	64%	36%
NN Group (NNT)	195	1.648	1.843	11%	89%
Nutreco Holding (NUOT)	841	3.282	4.123	20%	80%
Ordina (ORDT)	1.769	6.940	8.709	20%	80%
Philips (PHIT)	7.194	14.011	21.205	34%	66%
PostNL (PNLT)	5.018	20.404	25.422	20%	80%
Randstad (RNDT)	2.880	4.319	7.199	40%	60%
Reed Elsevier (RENT)	1.273	2.702	3.975	32%	68%
Royal Imtech (IMT/IMMT)	2.395	1.214	3.609	66%	34%
Royal Dutch Shell (RDT)	34.996	76.000	110.996	32%	68%
SBM Offshore (SBMT/SBOT)	8.456	12.293	20.749	41%	59%
Koninklijke Ten Cate (TCTT)	2.067	1.624	3.691	56%	44%
TKH Group (TKGT)	1.496	1.457	2.953	51%	49%
TNT Express (TNET)	915	2.252	3.167	29%	71%
TomTom (TTMT)	1.710	4.497	6.207	28%	72%
Unilever (UNAT)	9.530	27.336	36.866	26%	74%
USG People (USGT)	9.134	12.412	21.546	42%	58%
Unibail-Rodamco (UBLT)	826	1.350	2.176	38%	62%
Wessanen (WEST)	3.337	8.980	12.317	27%	73%
Vopak (VPKT)	576	919	1.495	39%	61%
Wereldhave (WHVT)	212	1.124	1.336	16%	84%
Wolters Kluwer (WKLT)	1.871	3.914	5.785	32%	68%
Equity options (weekly classes)	# TOM MTF	# Euronext	Total	% TOM MTF	% Euronext
Aegon (Weekly series)	40	13	53	75%	25%
ArcelorMittal (Weekly series)	442	3.957	4.399	10%	90%
ING (Weekly series)	1.922	4.333	6.255	31%	69%
Philips (Weekly series)	412	107	519	79%	21%
Royal Dutch Shell (Weekly series)	1.006	563	1.569	64%	36%
Total equity options	290.239	607.443	897.682	32%	68%

Total options	432.248	870.918	1.303.166	33%	67%
----------------------	----------------	----------------	------------------	------------	------------

Week 45 2014 – Cash

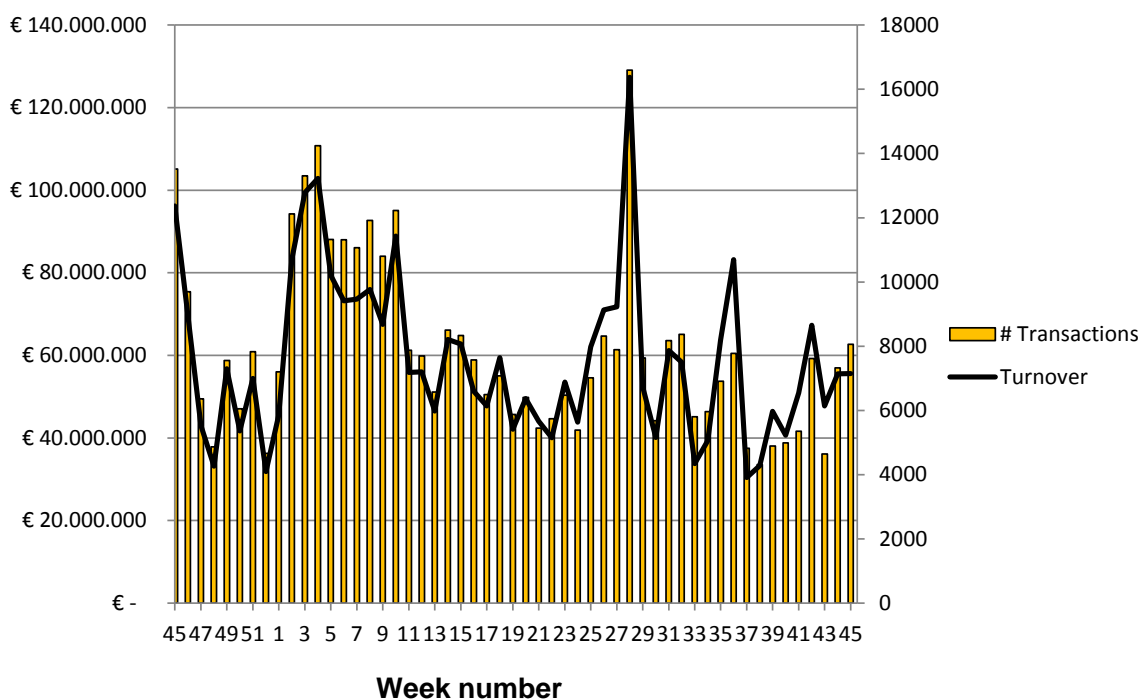


Update

WEEK 45

7 NOVEMBER 2014

1 year rolling turnover and volume



Statistics Week 45 2014

Date	# Transactions	Turnover	Volume	Average value per transaction
3-11-2014	1.262	€ 9.375.114	778.842	€ 7.429
4-11-2014	1.035	€ 9.099.397	684.513	€ 8.792
5-11-2014	1.317	€ 11.684.743	905.934	€ 8.872
6-11-2014	2.798	€ 14.840.405	1.330.868	€ 5.304
7-11-2014	1.648	€ 10.594.051	870.231	€ 6.428
	8.060	€ 55.593.711	4.570.388	

Contact

TOM MTF

Barbara Strozzilaan 310-322
1083 HN Amsterdam

+31 20 719 5030

www.tommtf.eu

info@tomgroup.eu

Week 45 statistics per share



WEEK 45

Update

7 NOVEMBER 2014

ISIN	Euronext	TOM	Total	TOM/MTF market share	ISIN	AXA SA	Euronext	TOM	Total	TOM/MTF market share
NL0009227249	175.347	58.598	233.945	25.0%	FR0000120628	AXA SA	37.251.338	14.423	37.265.761	0.0%
IE00B0M62Y33	294.304	28.133	322.437	8.7%	NL0000093955	UNILEVER NV-CVA	25.978.321	9.843	25.988.164	0.0%
NL0000337319	22.424.814	406.637	22.831.451	1.8%	FR0000120644	DANONE	8.832.235	2.599	8.834.834	0.0%
NL0000354488	4.951.828	81.564	5.033.392	1.6%	FR0000120172	CARREFOUR SA	12.647.240	3.559	12.650.799	0.0%
NL0000303600	108.609.318	1.601.601	110.210.919	1.5%	BE00003562700	DELHAIZE GROUP	3.023.353	738	3.024.091	0.0%
NL0000325265	44.848.259	498.241	45.346.500	1.1%	FR0000120271	TOTAL SA	32.769.099	6.343	32.775.442	0.0%
NL0000303709	31.469.112	310.566	31.779.678	1.0%	FR0000121014	LVMH MOET HENNESSY LOUIS VUI	4.622.934	744	4.623.678	0.0%
NL00009739416	36.787.652	337.563	37.125.215	0.9%	FR00010208488	GDF SUEZ	30.631.443	3.949	30.635.392	0.0%
NL0000852564	1.511.365	8.906	1.146.031	0.8%	BE00003739530	UCB SA	1.553.869	200	1.554.069	0.0%
NL0000275662	1.213.431	6.106	1.219.537	0.5%	FR00007054358	LYXOR UCITS ETF EURO STOXX 5	5.154.298	535	5.154.833	0.0%
FR0000045072	46.903.339	229.845	47.133.184	0.5%	FR0000121261	MICHELIN (CGDE)	25.706.779	2.372	25.709.151	0.0%
NL00010273215	6.877.099	31.564	6.908.663	0.5%	FR0000125486	VINCI SA	9.663.770	366	9.664.136	0.0%
NL0000329121	33.783.932	142.049	33.925.981	0.4%	BE00003565737	KBC GROEP NV	6.598.934	187	6.599.121	0.0%
NL0000009082	3.079.269	12.440	3.091.709	0.4%	NL0000288876	EUROCOMMERCIAL PROPRIETIE-CV	565.359	13	565.372	0.0%
NL0000009538	68.139.412	271.512	68.410.924	0.4%	BE00003810273	BELGACOM SA	5.245.874	110	5.245.984	0.0%
NL0000360618	10.363.518	35.466	10.398.984	0.3%	FR0000125338	CAP GEMINI	4.842.764	94	4.842.858	0.0%
FR0000031122	20.177.072	46.685	20.223.757	0.3%	FR00010307819	LEGRAND SA	5.118.547	96	5.118.643	0.0%
NL0000009538	16.115.564	41.293	16.156.857	0.2%	BE00003793107	ANHEUSER-BUSCH INBEV NV	9.741.798	48	9.741.846	0.0%
NL0000852580	1.278.945	2.667	1.281.612	0.2%	FR0000121667	ESSILOR INTERNATIONAL	2.853.413	14	2.853.427	0.0%
NL00000099827	5.580.762	10.953	5.591.715	0.2%	NL0000888691	AMIG ADVANCED METALLURGICAL	672.785	-	672.785	0.0%
NL0009294552	5.630.952	10.115	5.641.067	0.2%	NL0000334118	ASM INTERNATIONAL NV	1.719.166	-	1.719.166	0.0%
NL0000400653	2.916.279	4.935	2.921.214	0.2%	NL00010776944	BRUNEL INTERNATIONAL	982.604	-	982.604	0.0%
FR0000120809	30.565.199	49.076	30.614.275	0.2%	NL0000288967	CORIO NV	1.516.066	-	1.516.066	0.0%
NL0000289213	377.499	606	378.105	0.2%	NL00010583399	CORBION NV	867.454	-	867.454	0.0%
NL0000672325	16.386.047	23.308	16.409.355	0.1%	NL00009269109	HEIJMANS N.V.-CVA	1.095.843	-	1.095.843	0.0%
NL0000009165	3.405.577	4.626	3.410.203	0.1%	NL0000375749	TEN CATE NV	362.019	-	362.019	0.0%
NL00006144495	9.599.795	12.092	9.611.887	0.1%	NL0000387058	TOMTOM	6.735.375	-	6.735.375	0.0%
FR0010242511	8.077.827	10.049	8.087.876	0.1%	FR00010592014	LYXOR UCITS ETF DAILY LEVERA	9.693.786	-	9.693.786	0.0%
FR0000124141	12.993.399	13.367	13.006.766	0.1%	NL0000288918	VASTNED RETAIL NV	252.520	-	252.520	0.0%
LU0569974404	3.935.938	3.891	3.939.829	0.1%	NL00009432491	VOPAK	1.040.758	-	1.040.758	0.0%
NL0000395903	4.888.501	3.724	4.892.225	0.1%	NL0000292324	NIEUWE STEEN INVESTMENTS NV	383.157	-	383.157	0.0%
FR0000131906	6.697.354	5.099	6.702.453	0.1%	NL0000395317	KONINKLIJKE WESSANEN NV	1.403.439	-	1.403.439	0.0%
FR0000130577	4.954.857	3.722	4.958.579	0.1%	NL00006294290	ZIGGO NV	4.198.558	-	4.198.558	0.0%
FR0000120321	4.951.940	3.272	4.955.212	0.1%	BE00003822393	ELIA SYSTEM OPERATOR SA/NV	245.319	-	245.319	0.0%
NL0000009132	3.545.649	2.325	3.547.974	0.1%	BE00003764785	ACKERMANS & VAN HAAREN	171.822	-	171.822	0.0%
FR0010220475	9.075.610	5.817	9.081.427	0.1%	BE0974259880	D'IETIEN SA/NV	169.171	-	169.171	0.0%
LU0323134006	61.386.550	37.732	61.424.282	0.1%	BE00003678894	BEFIMMO	122.754	-	122.754	0.0%
FR0000133408	42.942.739	26.186	42.968.925	0.1%	BE0974259874	BEKAERT NV	215.410	-	215.410	0.0%
FR0000120578	18.111.044	11.012	18.122.056	0.1%	BE00003592044	COFINIMMO	128.334	-	128.334	0.0%
FR0000125007	8.676.120	4.277	8.680.397	0.0%	BE0974256852	COLRUYT SA	711.888	-	711.888	0.0%
FR0000121972	8.665.569	4.039	8.669.608	0.0%	BE00003797140	GROUPE BRUXELLES LAMBERT SA	399.959	-	399.959	0.0%
FR0000124711	1.451.849	673	1.452.527	0.0%	FR00007052782	LYXOR UCITS ETF CAC 40	1.807.549	-	1.807.549	0.0%
FR0000131708	4.618.024	2.093	4.620.117	0.0%	BE00003826436	TELENET GROUP HOLDING NV	653.662	-	653.662	0.0%
FR0000120073	4.426.745	1.990	4.428.735	0.0%	BE00003884047	UMICORE	2.012.629	-	2.012.629	0.0%