

# Shenzhen Stock Exchange Market Bulletin

May 17, 2024 (Issue 13)



## Market Summary

Listed Companies (No.)	2853
- Main Board	1509
- ChiNext Market	1344
Funds (No.)	686
Bonds (No.)	14303
Market Cap. (US\$ bn)	4,251.15
- Main Board	2,769.39
- ChiNext Market	1,481.76
Average Turnover Ratio	2.04
Average P/E Ratio	22.11
No. of IPO (YTD)	15

## Most Active Stocks

1	Zhejiang Wanfeng Auto Wheel Co., Ltd. (002085)
2	China Vanke Co., Ltd. (000002)
3	Zhongji Innolight Co., Ltd. (300308)

## Top Gainers

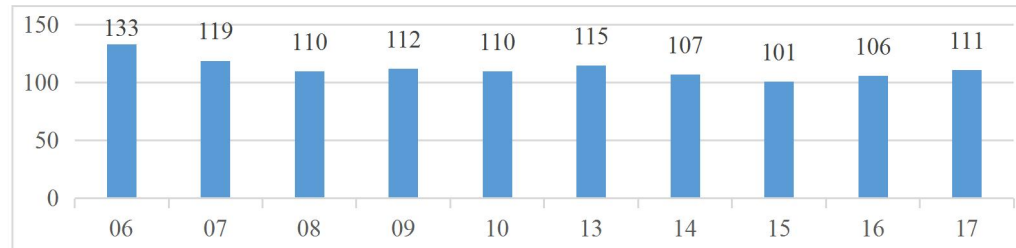
1	Reach Machinery Co., Ltd. (301596)
2	Shenyu Communication Technology Inc. (300563)
3	Lontruce Co., Ltd. (300175)

## Top Decliners

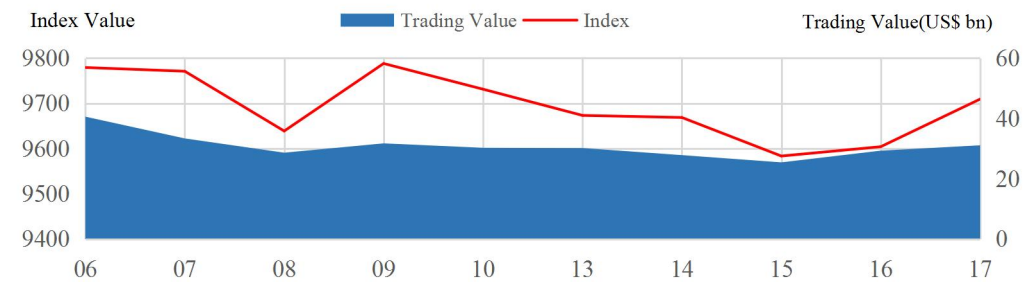
1	Blivex Energy Technology Co., Ltd. (300116)
2	Hebei Huijin Group Co., Ltd. (300368)
3	Strait Innovation Internet Co., Ltd. (300300)

## Daily Trading value (May 6-May 17)

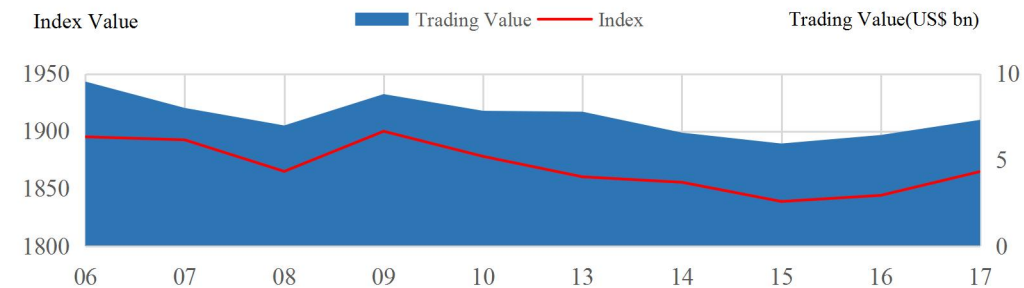
US\$ bn



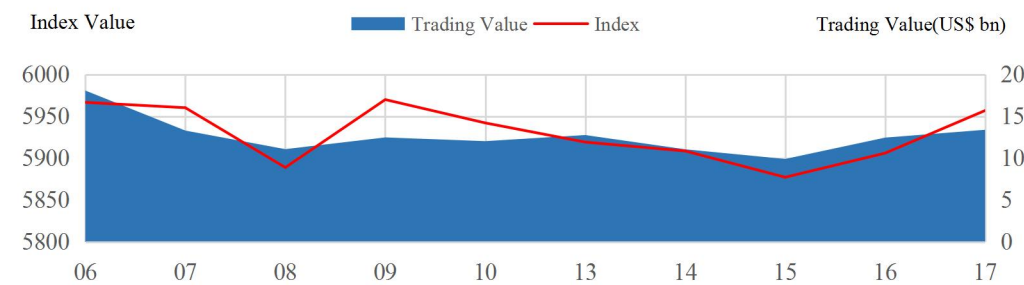
## SZSE Component Index (May 6-May 17)



## ChiNext Index (May 6-May 17)



## SZSE 100 Index (May 6-May 17)



## New Listing

### Reach Machinery (301596)

### Reach Machinery (301596)

Reach Machinery Co., Ltd. principally engages in the research, development, production and sale of key components for transmission and braking systems in automation equipment.