

Shenzhen Stock Exchange Market Bulletin

August 30, 2024 (Issue 27)



Market Summary

Listed Companies (No.)	2839
- Main Board	1489
- ChiNext Market	1350
Funds (No.)	707
Bonds (No.)	14831
Market Cap. (US\$ bn)	3,620.85
- Main Board	2,355.15
- ChiNext Market	1,265.71
Average Turnover Ratio	1.86
Average P/E Ratio	18.98
No. of IPO (YTD)	26

Most Active Stocks

1	Wuliangye Yibin Co., Ltd. (000858)
2	Contemporary Amperex Technology Co., Ltd. (300750)
3	Zhongji Innolight Co., Ltd. (300308)

Top Gainers

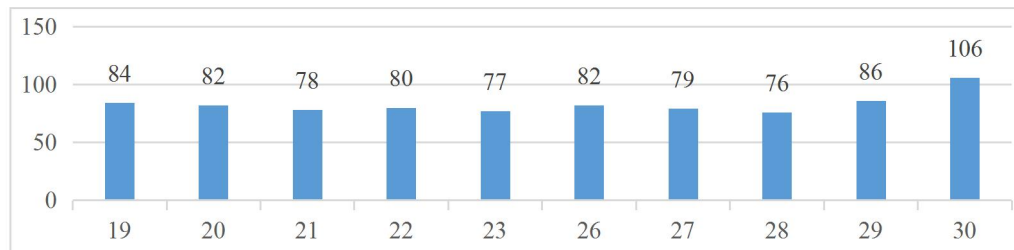
1	Anhui Jialiqi Advanced Composites Technology Co., Ltd. (301586)
2	Guangdong Transtek Medical Electronics Co., Ltd. (300562)
3	Shenzhen Huaqiang Industry Co., Ltd. (000062)

Top Decliners

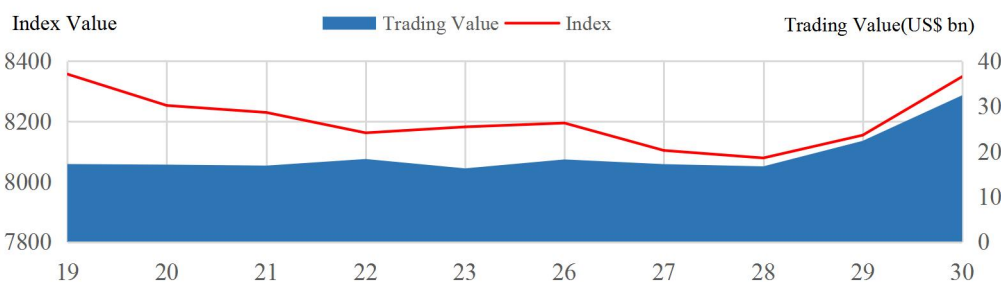
1	Shanxi Hi-Speed Group Co., Ltd. (000755)
2	Dingli Corp., Ltd. (300050)
3	Shenzhen L&A Design Holding Ltd. (300949)

Daily Trading value (August 19-August 30)

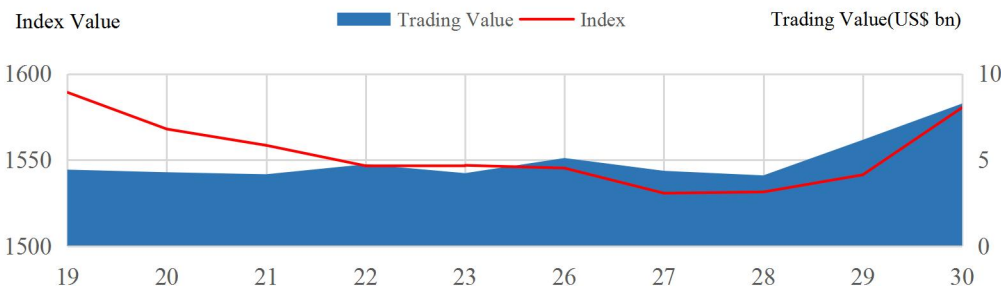
US\$ bn



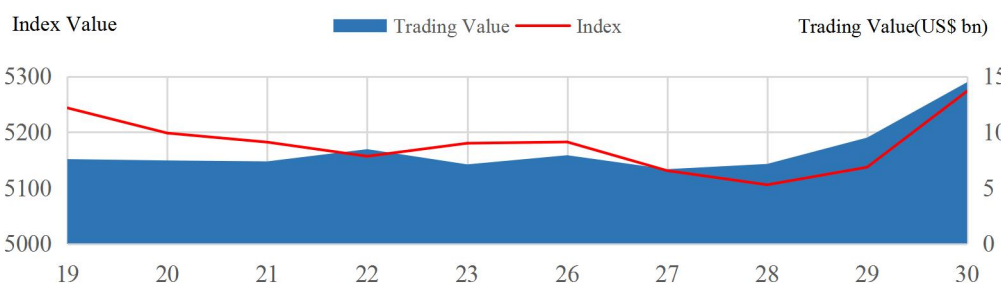
SZSE Component Index (August 19-August 30)



ChiNext Index (August 19-August 30)



SZSE 100 Index (August 19-August 30)



New Listing

Jialiqi (301586)

Jialiqi (301586)

Anhui Jialiqi Advanced Composites Technology Co., Ltd. principally engages in the research, development, production, sale and service of aerospace composite components.