

# Shenzhen Stock Exchange Market Bulletin

October 31, 2016 (Issue 36)



## Market Summary

Listed Companies (No.)	1,828
- Main Board	478
- SME Board	804
- ChiNext Market	546
Funds	494
Bonds	1,905
Market Cap. (US\$ bn)	3,359.6
- Main Board	1,085.3
- SME Board	1,468.6
- ChiNext Market	805.8
Average Turnover Ratio	2.16
Average P/E Ratio	42.59
No. of IPO (YTD)	82

## Most Active Companies

1	First Capital Securities Co., Ltd. (002797)
2	Nationz Technologies (300077)
3	Jiangxi Huangshanghuang Group Food Co., Ltd. (002695)

## Top Gainers

1	Anhui Huangshan Capsule Co., Ltd. (002817)
2	Shenzhen Hekeda Precision Cleaning Equipment Co., Ltd. (002816)
3	Broadex Technologies Co., Ltd. (300548)

## Top Decliners

1	Guangdong Eastone Century Technology Co., Ltd. (300310)
2	Wuhan Fingu Electronic Technology Co., Ltd. (002194)
3	Guanhao Biotech Co., Ltd. (300238)

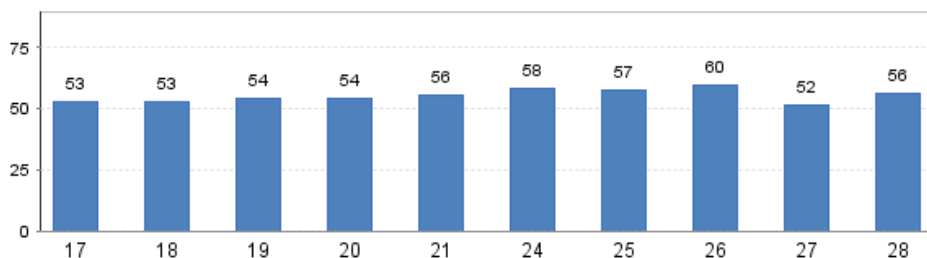
## New Listing

### Hekeda (002816)

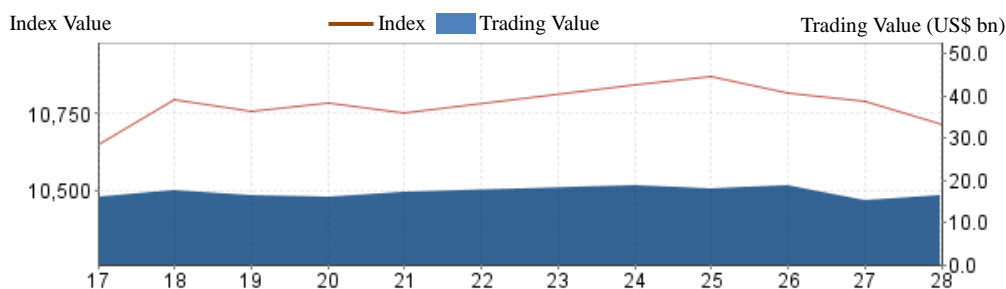
Hekeda landed on SME board on October 25, 2016. Shenzhen Hekeda Precision Cleaning Equipment Co., Ltd. principally engages in research and development, design, production and sales of precision cleaning equipment. In 2015, its operating income reached 367 million yuan with the net profit of 40 million yuan.

## Daily Trading Value (October 17 – October 28)

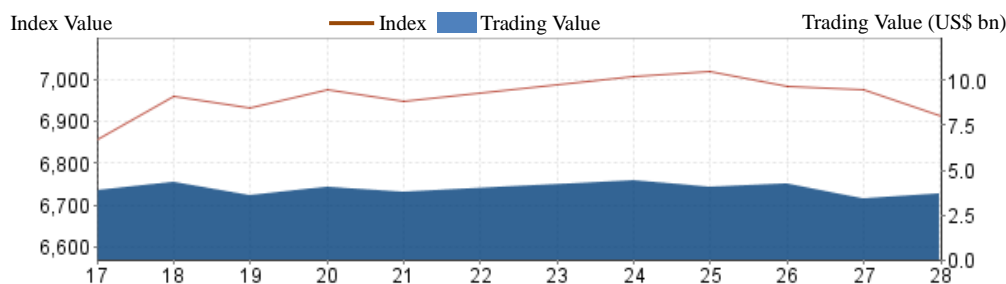
(US\$ bn)



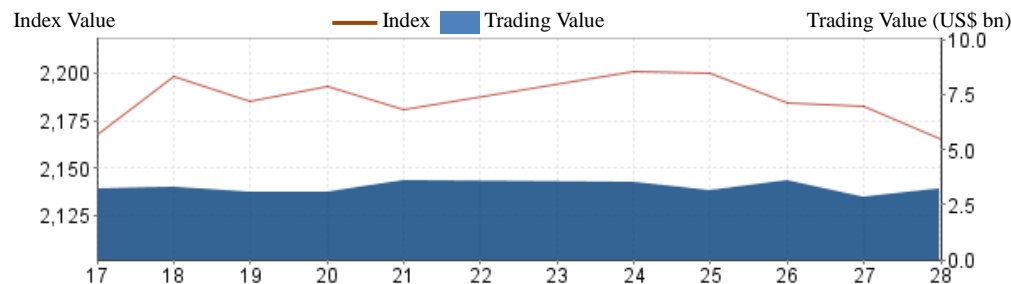
## SZSE Component Index (October 17 – October 28)



## SME Index (October 17 – October 28)



## ChiNext Index (October 17 – October 28)



## Market News

### SZSE, HKEx and CSDC Jointly Carries out the Training Session for Lecturers of Shenzhen-Hong Kong Stock Connect Program

Shenzhen Stock Exchange recently organized the first training session for lecturers of Shenzhen-Hong Kong Stock Connect Program in Shenzhen together with Hong Kong Exchanges and Clearing Limited and China Securities Depository and Clearing Co., Ltd., nearly 400 lecturers from teaching staff of member units and investment advisers of member sales department attended the training. In the training session, 3 organizations made systematic explanation on the key business points and teaching work requirements for the Stock Connect Program, trading features of Hong Kong stock market, and underlying stocks, depository, clearing and issuer business of Hong Kong Stock.

**Huangshan Capsule (002817)**

Huangshan Capsule landed on SME board on October 25, 2016. Anhui Huangshan Capsule Co., Ltd. principally engages in production and sales of medical empty capsules. In 2015, its operating income reached 254 million yuan with the net profit of 55 million yuan.

**SZSE Holds the First Face-to-Face Training Session for Shenzhen-Hong Kong Stock Connect Program**

On 25 October, 2016, Shenzhen Stock Exchange (SZSE) held the first face-to-face training session for Shenzhen-Hong Kong Stock Connect Program (the Program) together with China Securities Depository and Clearing Co., Ltd. (CSDC) in Hong Kong, nearly 120 securities brokers from broker's agencies in Hong Kong attended the training. In the training session, SZSE and CSDC respectively made systematic explanation on the basic features of Shenzhen stock market, main system arrangement for the Program, A-share market depository and clearing business and key points of settlement business of the Program.