

# Shenzhen Stock Exchange Market Bulletin

November 14, 2016 (Issue 38)

深圳证券交易所  
SHENZHEN  
STOCK EXCHANGE

## Market Summary

Listed Companies (No.)	1,835
- Main Board	478
- SME Board	806
- ChiNext Market	551
Funds	495
Bonds	1,960
Market Cap. (US\$ bn)	3,465.7
- Main Board	1,122.2
- SME Board	1,515.4
- ChiNext Market	828.0
Average Turnover Ratio	2.16
Average P/E Ratio	43.69
No. of IPO (YTD)	89

## Most Active Companies

1	China Vanke Co., Ltd (000002)
2	Shanghai Challenge Textile Company Limited (002486)
3	Sichuan Shuangma Cement Co., Ltd (000935)

## Top Gainers

1	Betta Pharmaceuticals Co., Ltd (300558)
2	Chengdu Fusen Noble-house Industrial Co., Ltd. (002818)
3	Shenzhen Silkroad Digital Vision Co., Ltd. (300556)

## Top Decliners

1	Yunnan Xiyi Industry Co., Ltd. (002265)
2	Zhejiang Idc Fluid Control Co., Ltd. (002468)
3	Ningbo Xinhai Electric Co., Ltd (002120)

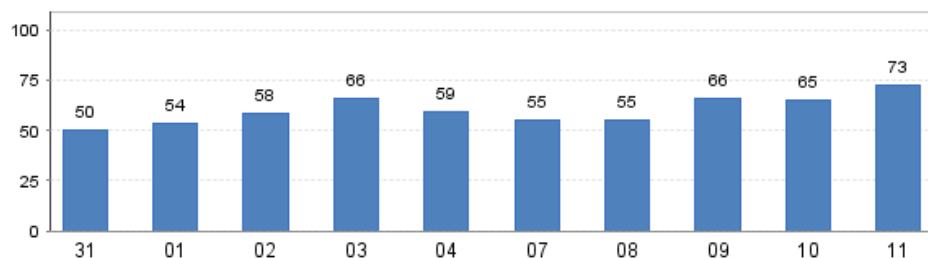
## New Listing

### Betta Pharmaceuticals (300558)

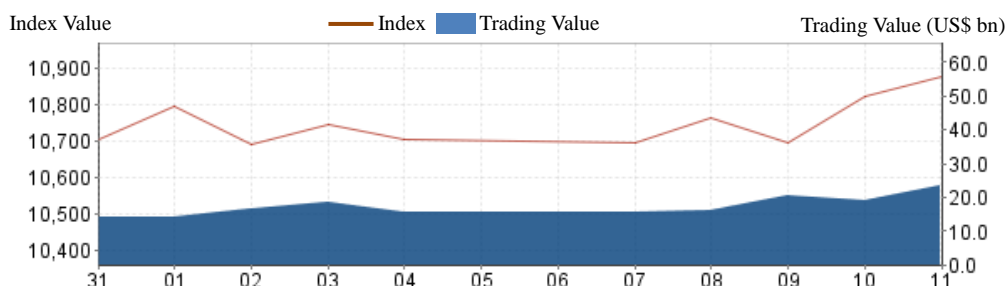
Betta Pharmaceuticals landed on ChiNext market on November 07. Betta Pharmaceuticals Co., Ltd. principally engages in research and development, production and sales of new medicines. In 2015, its operating income reached 915 million yuan with the net profit of 345.3 million yuan.

## Daily Trading Value (October 31 – November 11)

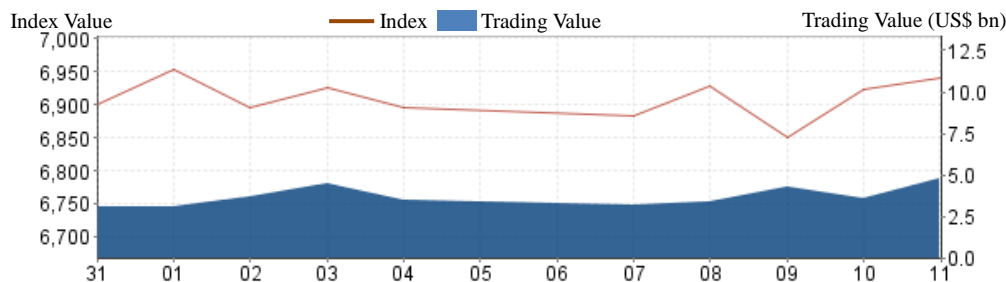
(US\$ bn)



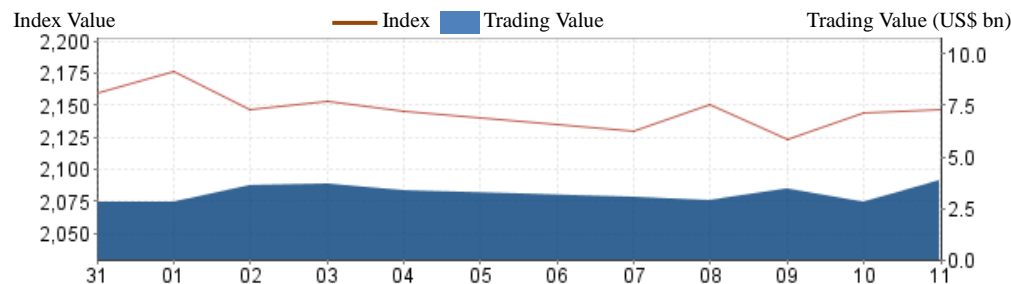
## SZSE Component Index (October 31 – November 11)



## SME Index (October 31 – November 11)



## ChiNext Index (October 31 – November 11)



## Market News

### The Technology System for Shenzhen-Hong Kong Stock Connect All Set

SZSE has completed stress test and high availability test of Shenzhen-Hong Kong Stock Connect trading system, verified that the performance and capacity of Shenzhen-Hong Kong Stock Connect business in SZSE New trading system are identical to expectation, and that it functioned normally in the scenario of failure of internet line, breakdown of the center of Hong Kong Stock Exchange and the switch of center of SZSE. All the testing result showed that relevant technology system of Shenzhen-Hong Kong Stock Connect, Shenzhen-Hong Kong Stock Connect operation procedure and Shanghai- Hong Kong Stock Connect could co-operate normally, and thus is eligible for setting on line.

**Fusen Noble-House (002818)**

Fusen Noble-House landed on SME market on November 09. Company is principally engages in development and leasing of, and services related to decorative and building materials, home furnishing and auto parts. In 2015, its operating income reached 1.041 billion yuan with the net profit of 452.7 million yuan.

**Oriental Jicheng (002819)**

Oriental Jicheng landed on SME market on November 11. The company is an electronic measuring instruments comprehensive services provider, and principally provides one-stop services including selling and leasing of electronic measuring instruments, and system integration. In 2015, its operating income reached 604 million yuan with the net profit of 31.0 million yuan.

**China's R&D Spending Rises**

According to a report jointly published by the National Bureau of Statistics (NBS), the Ministry of Science and Technology and the Ministry of Finance, China's research and development (R&D) spending has consistently gone up and reached about US\$ 208.4bn in 2015, up 8.9 percent over 2014. Last year's R&D expenditure equaled 2.07 percent of the GDP, up from 2.02 percent in 2014 and marking the third straight year above the 2-percent mark. Chinese companies were the largest contributor, according to the report. Enterprises, led by those in the manufacturing, computer and telecommunications sectors, spent about US\$ 156.0bn on R&D in 2015, up 8.2 percent from the previous year and accounting for 76.8 percent of the total.