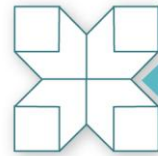




For more than fifteen years, the Palestine Exchange (PEX) has maintained its presence under challenging political and economic conditions. The PEX has been able to position itself as a robust exchange among its emerging markets peers.

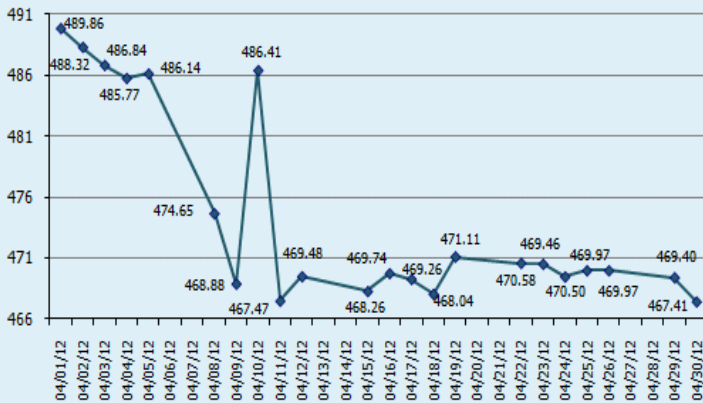


Trading Summary

AL-Quds index	3.97%	Listed companies	47
Trading value (USD)	31,276,714	Traded companies	35
Trading volume (shares)	13,656,169	Gainers	7
No. of transactions	3,925	Decliners	21
Index close (points)	467.41	Unchanged	7

Al-Quds Index

Daily closing of AL- Quds index during April 2012

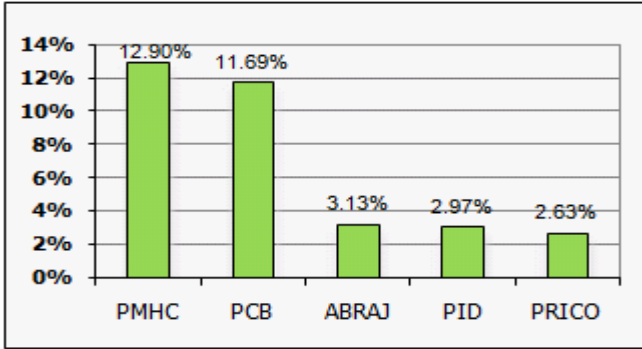


Indices

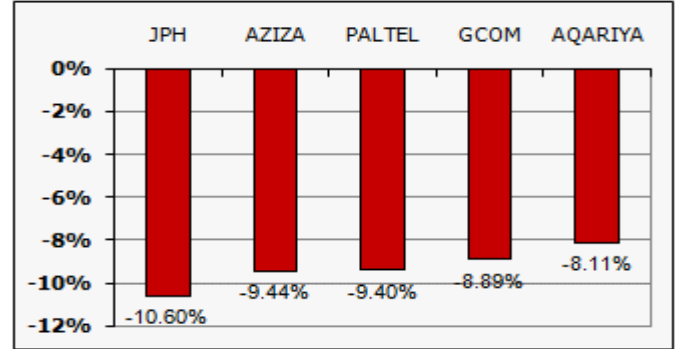
Index	Points	Change (%)
AL-Quds	467.41	-3.97%
General	248.87	-3.41%
Banking & Financial Services	100.17	2.08%
Industry	62.51	-1.76%
Insurance	47.73	-2.69%
Investment	21.86	-0.55%
Services	47.82	-6.87%



Top 5 gainers



Top 5 decliners

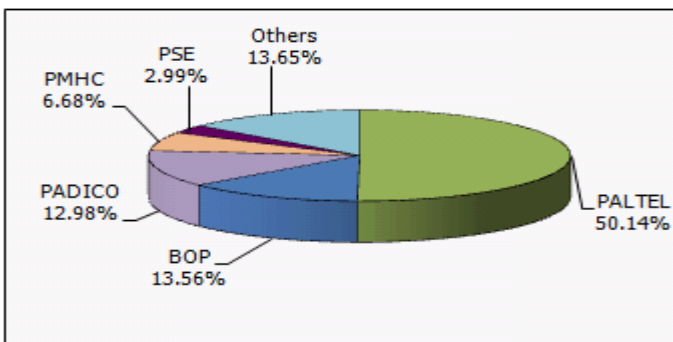


Company	Symbol	Currency	Closing price	Change (%)
Palestine mortgage & Housing Corporation	PMHC	USD	1.05	12.90
Palestine Commercial Bank	PCB	USD	0.86	11.69
AL-Wataniah Towers	ABRAJ	USD	0.99	3.13
Palestine Investment & Development	PID	JOD	1.04	2.97
Palestine Real Estate Investment	PRICO	JOD	0.78	2.63

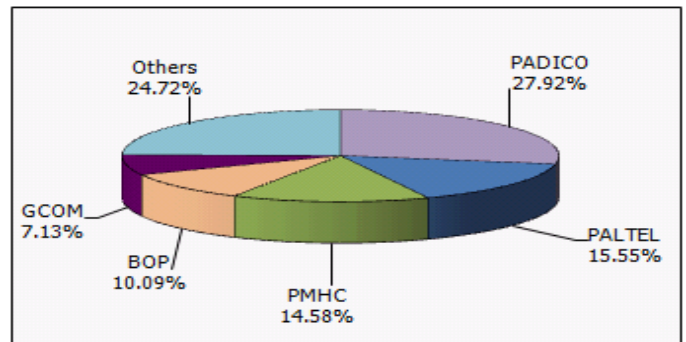
Company	Symbol	Currency	Closing price	Change (%)
Jerusalem Pharmaceutical	JPH	JOD	4.47	-10.60
Palestine Poultry	AZIZA	JOD	2.11	-9.44
Palestine Telecommunications	PALTEL	JOD	5.01	-9.40
GLOBALCOM Telecommunications	GCOM	USD	0.41	-8.89
Al- Aqariya Trading Investment	AQARIYA	JOD	0.68	-8.11



Top 5 stocks by value



Top 5 stocks by volume



Company	Symbol	Value traded (US\$)	% of total
Palestine Telecommunications	PALTEL	15,683,114	50.14
Bank of Palestine	BOP	4,239,907	13.56
Palestine Development & Investment	PADICO	4,058,395	12.98
Palestine mortgage & Housing Corporation	PMHC	2,090,207	6.68
Palestine Securities Exchange	PSE	934,474	2.99

Company	Symbol	Volume traded	% of total
Palestine Development & Investment	PADICO	3,812,769	27.92
Palestine Telecommunications	PALTEL	2,124,040	15.55
Palestine mortgage & Housing Corporation	PMHC	1,990,700	14.58
Bank of Palestine	BOP	1,378,249	10.09
GLOBALCOM Telecommunications	GCOM	974,113	7.13



Top 5 by turnover ratio

Company	Symbol	Turnover ratio
GLOBALCOM Telecommunications	GCOM	9.98
Palestine mortgage & Housing Corporation	PMHC	9.95
Alrafah Microfinance Bank	AMB	2.47
Jerusalem Real Estate Investment	JREI	2.12
Palestine Securities Exchange	PSE	1.86



Top 5 by daily average turnover

Company	Symbol	Daily average turnover value(US\$)
Palestine Telecommunications	PALTEL	712,869
Bank of Palestine	BOP	192,723
Palestine Development & Investment	PADICO	184,472
Palestine mortgage & Housing Corporation	PMHC	95,009
Palestine Securities Exchange	PSE	42,476



Top 5 by market Cap

Company	Symbol	Market Cap (US\$)	% of total
Palestine Telecommunications	PALTEL	930,100,338	33.39
Bank of Palestine	BOP	381,900,000	13.71
Wataniya Palestine Mobile Telecommunications	WATANIYA	301,860,000	10.84
Palestine Development & Investment	PADICO	265,000,000	9.51
Palestine Electric	PEC	69,000,000	2.48



Top 5 by free float

Company	Symbol	% of free float
Alshark Electrode	ELECTRODE	85.49
Palestine Development & Investment	PADICO	84.25
Al-Aqariya Trading Investment	AQARIYA	80.59
The Arab Real Estate Establishment	ARE	73.75
The Ramallah Summer Resorts	RSR	70.59



Comparisons

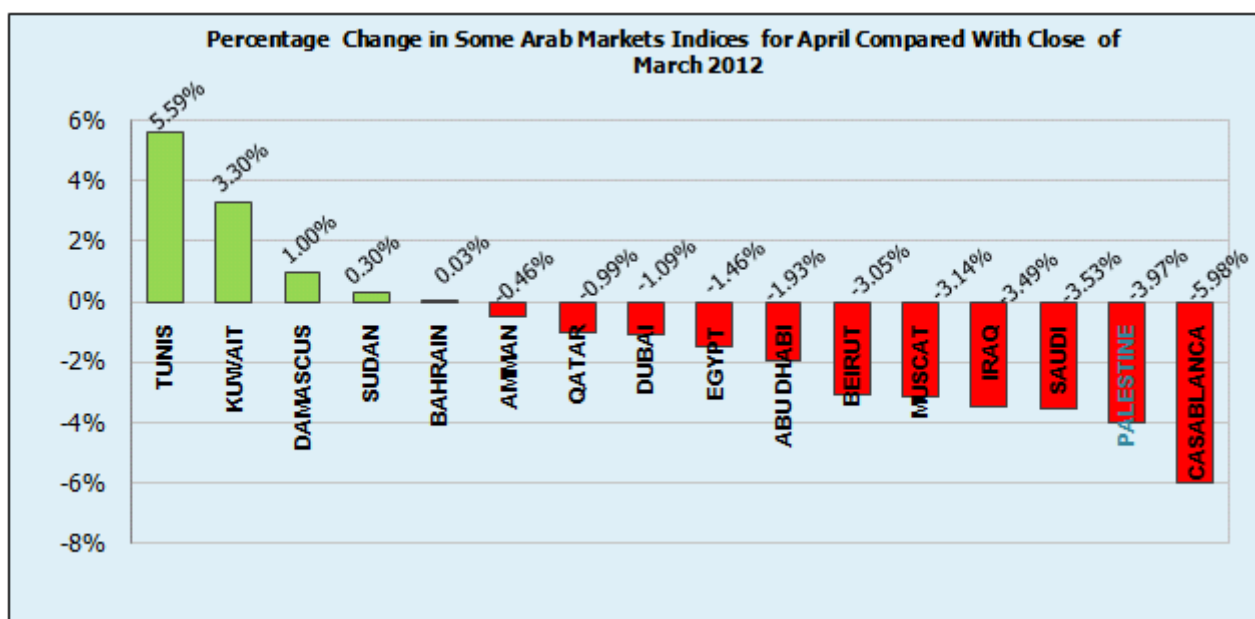
Item	March 2012	April 2012	Change (%)
Trading volume (#)	15,362,088	13,656,169	-11.10
Trading value (US\$)	38,317,246	31,276,714	-18.37
Number of transactions	3,723	3,925	5.43
Number of trading sessions	20	22	10.00
Daily average trading value (US\$)	1,915,862	1,421,669	-25.79
Market Cap (US\$)	2,834,242,311	2,785,237,755	-1.73

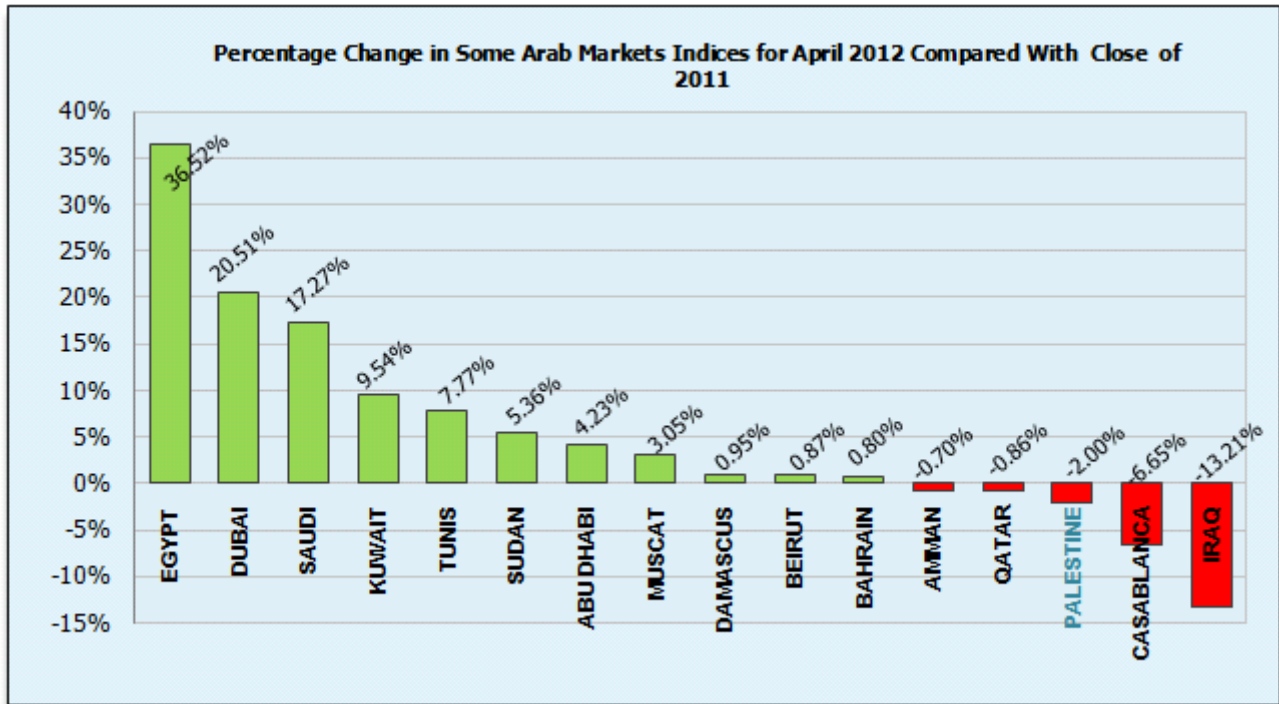
Month	Trading Value (USD millions)			Trading Volume (million shares)			Market Cap (US\$ millions)		
	2011	2012	Change (%)	2011	2012	Change (%)	2011	2012	Change (%)
January	28.15	31.48	11.83	17.63	18.10	2.67	2,765.73	2,779.40	0.49
February	27.84	25.94	-6.82	15.10	13.90	-7.95	2,731.78	2,809.89	2.86
March	30.61	38.32	25.19	16.55	15.36	-7.19	2,814.96	2,834.24	0.68
April	42.31	31.28	-26.08	22.62	13.66	-39.63	2,844.75	2,785.24	-2.09

Quarterly (US\$ millions)	Trading Value								Change (%) (Q1/2012-Q4/2011)
	2011				2012				
	Q1	Q2	Q3	Q4	Q1	Q2	Q3	Q4	
	86.60	136.39	48.28	94.37	95.75				1.46 %

Quarterly (million shares)	Trading Volume								change (%) (Q1/2012-Q4/2011)
	2011				2012				
	Q1	Q2	Q3	Q4	Q1	Q2	Q3	Q4	
	49.28	71.64	24.73	38.89	47.33				21.70 %

PEX in comparison with other regional exchanges





News

- ⇒ **The Palestine Securities Exchange (PSE) was listed on the PEX on 04 April 2012.** The PSE stock was floated as per the exchange regulations and 79 transaction were executed on the share with a total trading value of USD 684,000. The PSE stock closed at a price of USD 5.07 a share.
- ⇒ **Some listed companies held their general assembly meetings** and approved the following:
- **Bank of Palestine: (BOP):** 7.5% cash dividend and 11.67% stock dividend.
 - **Birzeit Pharmaceuticals (BPC):** 10% cash dividend.
 - **Alshark Electrode Company (ELECTRODE):** 12% cash dividend.
 - **Golden Wheat Mills (GMC):** 6% cash dividend.
 - **Jerusalem Pharmaceutical: (JPH):** 10% cash dividend and 20% stock dividend.
 - **Palestine Telecommunication: (PALTEL):** 40% cash dividend.
 - **Palestine Electric: (PEC):** 10% cash dividend.
 - **Ahliea Insurance Group: (AIG):** 19.41% stock dividend.
 - **Palestine Real Estate Investment: (PRICO):** 5.0% cash dividend.
 - **Trust International Insurance: (TRUST):** 10% cash dividend.
 - **The Vegetable Oil Industries: (VOIC):** 20% cash dividend.