



NZX Limited - Monthly Shareholder Metrics

August 2017

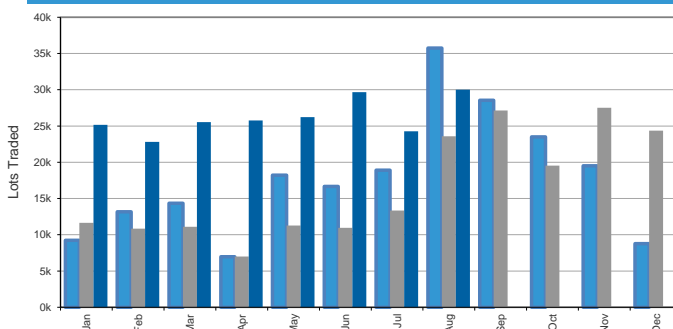
These Shareholder Metrics represent the key features of NZX's operations in each of its core businesses. The Metrics focus on what drives the revenue performance of NZX, so as to give a consistent and transparent comparison across time periods for each business line.

Markets

NZX Listed Issuers			Aug 2017	Change YoY
Total Equity Securities	163	-4.7%		
Total Listed Debt Securities	116	14.9%		
Total Other Securities	26	0.0%		
Total Listed Securities	305	2.3%		
Total NZX Main Board Issuers	162	-3.6%		
Total NZAX Issuers	17	-5.6%		
Total NXT Issuers	4	0.0%		
Total NZDX Issuers	44	4.8%		
Cash Market Trading			Aug 2017	Change YoY
Total Trades	179,530	18.9%		
Daily Average Trades	7,806	18.9%		
Total Trades < \$50k	170,046	21.4%		
Total Value Traded	\$4.2 b	3.0%		
Daily Average Value Traded	\$181 m	3.0%		
Total Equity Transactions				
Total Trades	176,336	19.5%		
Value Traded	\$4.0 b	2.7%		
Total Debt Transactions				
Total Trades	3,194	-7.1%		
Value Traded	\$168 m	9.9%		
Cumulative Numbers - YTD				
Number of Trades	1,254,221	4.8%		
Total Value Traded	\$27.5 b	-8.9%		
Capital Raising			Aug 2017	YTD
New Capital Listed				
IPOs and Compliance Listings	\$0.00 b	\$0.48 b		
New Debt Listings	\$0.00 b	\$2.09 b		
Secondary Capital Raisings				
Total Capital Raised By All Issuers	\$243 m	\$2,933 m		
Total Equity Raised - Primary Issuers	\$83 m	\$677 m		
Total Equity Raised - Dual & Secondary Issuers	\$39 m	\$1,351 m		
Total Debt Raised	\$121 m	\$905 m		
Number of Capital Raising Events	19	110		
Capital Raised < \$0.5m	3	15		
Capital Raised > \$0.5m < \$10m	9	49		
Capital Raised > \$10m < \$100m	7	43		
Capital Raised > \$100m	0	3		
Market Capitalisation				
All Equity	\$127.0 b	1.1%	48.0%	
All Debt	\$28.2 b	18.1%	10.7%	
NZX Indices Performance			Aug 2017	Change YoY
S&P/NZX 50 Index	7,817	5.6%		
S&P/NZX 50 Portfolio Index	4,854	7.0%		
S&P/NZX A-Grade Bond Index	5,079	2.6%		
S&P/NZX All Swap Index	200	0.7%		
Clearing House / Depository			Aug 2017	Change YoY
Gross Value of Cleared Trades over Month	\$4.2 b	2.5%		
Collateral Held At Month End	\$51.9 m	48.1%		
Depository transactions	2,657	-2.5%		
Assets under custody in depository	\$434 m	13.3%		
Value of stock lent over month	\$542 m	101.3%		
Wholesale Data			Aug 2017	Change YoY
Terminal Numbers - Professional*	6,131	2.7%		
Terminal Numbers - Retail*	1,280	2.4%		
Licences - Value > \$20k pa	34	21.4%		
Licences - Value < \$20k pa	60	0.0%		
* 3 month average				
Direct Data Products			Aug 2017	Change YoY
Proprietary Security Subscription Products	391	3.2%		
- Products ≥ \$3,000 p.a	152	10.9%		
- Products < \$3,000 p.a.	239	-1.2%		

Derivatives	Aug 2017	Change YoY
Futures - Total Lots Traded	25,476	17.2%
Options - Total Lots Traded	4,540	145.4%
Open Interest	61,887	90.2%

Derivatives Total Lots Traded 2015 / 2016 / 2017



Energy Contracts	Aug 2017
Operating / Technology Contracts	17
- Contracts > = \$500k p.a.	4
- Contracts < \$500k p.a.	13

Funds Services

SuperLife	Aug 2017	Change YoY
Funds Under Management - KiwiSaver	\$687 m	18.5%
Funds Under Management - Other	\$1,158 m	15.1%
Total	\$1,844 m	16.4%

Smartshares	Aug 2017	Change YoY
Funds Under Management - External	\$610 m	26.0%
Funds Under Management - SuperLife funds	\$1,356 m	16.5%
Total	\$1,966 m	19.3%
Units on Issue	849 m	18.1%

NZX Wealth Technologies	Aug 2017	Change YoY
Funds Under Administration	\$1,206 m	-8.3%
Renamed from Apteryx		

Agri

Direct Data Products	Aug 2017	Change YoY
Subscriptions - NZ Agri Data Products	2,635	12.8%
Subscription - Australian Agri Data Products	1,499	-6.1%
Total Paid Advertising Page Equivalents*	73	-3.9%
Total Paid Advertising Page Equivalents YTD*	798	4.7%

* Total paid advertising page equivalents relates to Farmers Weekly only.

Notes

1. All figures are measured at the end of the last trading day of the month unless otherwise stated. Change refers to the change since the same period last year unless otherwise stated i.e. Change YoY is change versus the same period last year.
2. All Equity Market Capitalisation includes all securities quoted on the NZX Main Board, NZX Alternative Market and NXT Market.
3. Market Capitalisation for the NZX Debt market is the total nominal (face) value of all quoted securities excluding New Zealand Government Stock.
4. NZX Limited wishes to remind readers that the above operational statistics are based on the Group's internal records, which are unaudited. Differences may arise between this data and that disclosed in subsequent audited financial statements.

To enquire about NZX products or services, please contact: NZX Data on +64-4-471 4390
or email: data@nzx.com

To enquire about information listed on this sheet, please email cds@nzx.com