



## NZX Limited - Monthly Shareholder Metrics

June 2015

These Shareholder Metrics represent the key features of NZX's operations in each of its the core businesses. The Metrics focus on what drives the revenue performance of NZX, so as to give an accurate, consistent and transparent comparison across time periods for each business line.

### Capital Markets

NZX Listed Issuers	Jun 2015	Change YoY
Total Equity Securities	172	2.4%
Total Listed Debt Securities	79	-7.1%
Total Other Securities	14	133.3%
Total Listed Securities	265	2.3%
Total NZX Main Board Issuers	153	4.8%
Total NZAX Issuers	22	10.0%
Total NXT Issuers	1	n/a
Total NZDX Issuers	38	-7.3%

Capital Raising	Jun 2015	YTD
<b>New Capital Listed</b>		
IPOs and compliance listings	\$0.04 b	\$0.16 b
New debt issues	\$0.80 b	\$1.20 b

<b>Secondary Capital Raisings</b>		
Total Capital Raised By All Issuers	\$455 m	\$1,218 m
Total Equity Raised - Primary Issuers	\$255 m	\$677 m
Total Equity Raised - Dual & Secondary Issuers	\$0 m	\$341 m
Total Debt Raised	\$200 m	\$200 m
Number of Capital Raising Events*	34	87
Capital Raised < \$0.5m	10	29
Capital Raised > \$0.5m < \$10m	15	41
Capital Raised > \$10m < \$100m	8	13
Capital Raised > \$100m	1	4

\* includes 14 events in respect of employee share scheme allotments

Market Capitalisation	Jun 2015	Change YoY	% of GDP
All Equity	\$100.2 b	13.3%	42.1%
All Debt	\$13.2 b	-2.4%	5.5%

NZX Indices Performance	Jun 2015	Change YoY
S&P/NZX 50 Index	5,727	11.4%
S&P/NZX 50 Portfolio Index	3,548	13.6%
S&P/NZX A-Grade Corporate Bond Index	4,595	8.4%
S&P/NZX All Swap Index	181	8.7%

Cash Market Trading	Jun 2015	Change YoY
Total Trades	139,527	31.7%
Daily Average Trades	6,644	25.4%
Total Trades < \$50k	130,558	32.4%
Total Value Traded	\$3.2 b	9.4%
Daily Average Value Traded	\$152 m	4.2%

<b>Total Equity Transactions</b>		
Total Trades	136,779	32.5%
Value Traded	\$3.1 b	8.9%

<b>Total Debt Transactions</b>		
Total Trades	2,748	-1.1%
Value Traded	\$106 m	26.8%

<b>Cumulative Numbers - YTD</b>		
Number of Trades	679,605	5.5%
Total Value Traded	\$17.9 b	1.9%

Clearing House / Depository	Jun 2015	Change YoY
Gross Value of Cleared Trades over Month	\$3.3 b	8.3%
Collateral Held At Month End	\$34.4 m	14.6%
Depository transactions	2,035	15.1%
Assets under custody in depository	\$290 m	27.8%
Value of stock lent over month	\$200 m	37.2%

Wholesale Data	Jun 2015	Change YoY
Terminal Numbers - Professional*	6,069	-4.4%
Terminal Numbers - Retail*	970	-10.0%
Licences - Value > \$20k pa	27	17.4%
Licences - Value < \$20k pa	55	19.6%

\* 3 month average

Direct Data Products	Jun 2015	Change YoY
Proprietary Security Subscription Products*	402	-18.3%
- Products >= \$3,000 p.a.	133	-21.3%
- Products < \$3,000 p.a.	269	-16.7%

\* the decline in subscription products compared to the figures reported for May 2015 reflects the removal of subscriptions for indices products following the transfer of responsibility for NZX indices to S&P DJI in June 2015

## Funds Management

SuperLife	Jun 2015	Change YoY
Funds Under Management - Kiwisaver	\$425 m	27.7%
Funds Under Management - Other	\$903 m	7.5%
Total	\$1,328 m	13.2%

Smartshares	Jun 2015	Change YoY
Funds Under Management - External	\$438 m	16.8%
Funds Under Management - SuperLife funds	\$166 m	n/a
Total	\$604 m	n/a
Units on Issue	290 m	64.6%

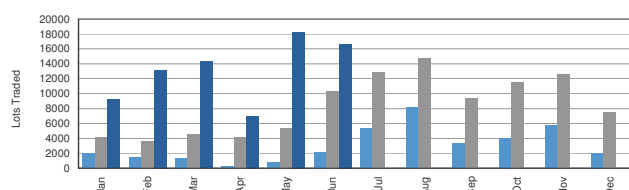
## Agri Information

Direct Data Products	Jun 2015	Change YoY
Dairy Information Subscriptions	9,520	2.8%
Grain Information Subscriptions	1,841	-7.7%
General Agri Subscriptions	11,584	11.9%
Total Paid Advertising Page Equivalents	146	-19.3%
Total Paid Advertising Page Equivalents YTD	1,000	-17.4%

## Soft Commodities

### Derivatives

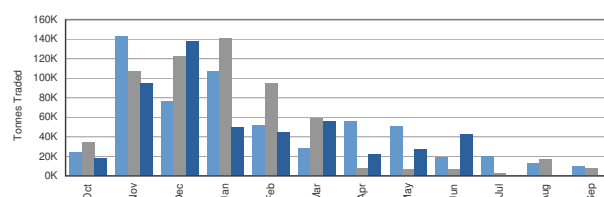
Lots Traded 2013 / 2014 / 2015



	Jun 2015	Change YoY
Lots Traded	16,659	61.0%
Open Interest	32,764	153.4%

### Grain Trading

Tonnes Traded Monthly (12/13 v 13/14 v 14/15 season)



	Season to date	Change YoY
Tonnes Traded	491,934	-15.2%

## Market Operations

Energy Contracts	Jun 2015
Operating / Technology Contracts	16
- Contracts > = \$500k p.a.	4
- Contracts < \$500k p.a.	12

## Notes

1. All figures are measured at the end of the last trading day of the month unless otherwise stated. Change refers to the change since the same period last year unless otherwise stated i.e. Change YoY is change versus the same period last year.
2. All Equity Market Capitalisation includes all securities quoted on the NZX Main Board, NZX Alternative Market and NXT Market.
3. Market Capitalisation for the NZX Debt market is the total nominal (face) value of all quoted securities excluding New Zealand Government Stock.
4. The Grain Trading season in Australia runs from October to September.
5. NZX Limited wishes to remind readers that the above operational statistics are based on the Group's internal records, which are unaudited. Differences may arise between this data and that disclosed in subsequent audited financial statements.

To enquire about NZX products or services, please contact: NZX Data on +64-4-471 4390  
or email: [info@nzx.com](mailto:info@nzx.com)

To enquire about information listed on this sheet, please email [info@nzx.com](mailto:info@nzx.com)