

### Promote yourselves in our e-publication

The CSE has completely reconstructed its on-line publication in order to provide the best possible information to market participants. This newsletter is sent electronically to thousands of recipients in Cyprus, Greece and abroad. In this context, the CSE has made provision for the promotion of companies through advertising. Any company wishing to promote its products and in the context of the upcoming European Union Presidency of the Republic of Cyprus during the second half of 2012 and due to the wide range active participation of the Organization in the European Federations for stock market issues, the Cyprus Stock Exchange (CSE) has undertaken some important initiatives hosting and putting under its auspices the organization of major conferences - seminars in Cyprus. services through this new updated e-publication can contact the CSE on [www.cse.com.cy](http://www.cse.com.cy). Businesses can also advertise on the CSE website.

### Contact the CSE

These are the CSE's contact details:  
Cyprus Stock Exchange  
71-73 Lordou Vironos Avenue,  
1096 Nicosia,  
P.O.Box 25427  
Nicosia, Cyprus  
Tel.. (357) 22 712300  
Fax. (357) 22 570308  
Email:  
[info@cse.com.cy](mailto:info@cse.com.cy)  
Website:  
[www.cse.com.cy](http://www.cse.com.cy)

### Read on this edition

- The statistics of the market in charts/tables
- CSE's activities and decisions
- News of CSE's listed companies

# briefing from the CSE

CSE monthly electronic edition

March 2015 · Issue 218

## Emerging Companies Market (ECM) of the Cyprus Stock Exchange (CSE)

by Eliza Stasopoulou ,  
Officer at the CSE



The Emerging Companies Market (E.C.M) of the Cyprus Stock Exchange (CSE) was launched in March 2010.

The E.C.M. Market is considered as a Multilateral Trading Facility (MTF) according to the markets in Financial Instruments Directive (MIFID Directive). It is based on simplified listing requirements and fast - flexible listing procedures (e.g. on - line application, immediate response etc.). The E.C.M. operates according to the Regulatory Decisions of the Council of the CSE. This listing fees are very low and competitive in relation to similar markets abroad. In this market there is also the possibility of listing newly established issuers, start-ups (under conditions).

In the E.C.M Market, the titles of 23 companies have been listed with a wide range of activities - Trade, Development of new projects, Golf Resorts, Insurance companies, Consulting Services, Hydrocarbons etc. Out of the 23 listed companies 16 of them are from Cyprus, two are from Greece, one is from Malta and one from Hungary. Most of the Cyprus companies are of foreign interests with shareholders from abroad such as from Greece (4), Israel (1), Asia (4) etc. In this market 3 corporate bonds are also traded with issuers from Luxembourg, the United Kingdom and Cyprus.

The total market capitalization of the ECM is around € 735 m..

Companies listed on the ECM of the CSE have a number of advantages such as the facility of a price setting mechanism for titles, the ability to raise capital and easy access to the secondary market (direct funding and fund raising), increased company visibility/ recognition, the ability to pledge securities and the ability to execute acquisitions.

**continues at the 3rd page**

**N.E.A.**

Νεοαναπτυσσόμενων Εταιρειών Αγορά

Emerging Companies Market

**E.C.M.**



## In March 2015

### (i) The General Index of the CSE reached 79,88 points

On the last trading session of March 2015 the General Index reached 79,88 points, representing a relative increase of 1,77% from the previous month. The value of shares traded exhibited a decrease of 12,84% compared to the previous month.

It is worth mentioning however, that the highest level that the General Index reached for the month was 80,48 points. The other Market Indices reached the following levels: Main Market reached 59,45, Parallel Market 821,66, Alternative Market 695,92, Investment Companies 771,09 points. On a sectoral



level, the Hotels Index reached 384,35 points. The FTSE/CySE20 reached 46,35 points and finally the FTSE Med reached 5.780,69 points.

The market capitalisation of shares (excluding the Investment Companies Market) reached € 3,12 billion. Accord-

ing to this month's results, the Main Market accounted for 27,77% of the total market capitalisation, the Parallel Market 2,47%, the Alternative Market 5,50%, the Investment Companies Market 1,17%, the Special Category 1,52%, the Special Characteristics Market 1,07% and the Bond Market 60,50%. Moreover, the total market capitalisation including the Investment Companies Market, Warrants and the Bond Market reached € 8,13 billion compared to € 8,14 billion the previous month, registering a decrease of 0,08%.



#### MONTHLY MARKET OVERVIEW

This column contains information of the CSE market for the month in review and covers the fluctuations of the indices of the various CSE's markets as well as the trading volumes.



### (ii) Total Trading Volume was €13.07 m.

The total value of transactions during the month in review reached € 13,07 million, with an average of € 0,62 million per trading session. The Financials sector contributed 70,80% to the total value traded which was the highest among all other sectors. Investors primarily focused their interest on the shares of "Bank of Cyprus Public Company Ltd" and also on shares of "Hellenic Bank Public Company Ltd" with 53,69% and 13,91% of the total value respectively.



## Emerging Companies Market (ECM) of the Cyprus Stock Exchange (CSE)

The ECM offers new investment opportunities for investors with possibly higher risk potential for investments and new business opportunities for the economic environment in general, eg for banks, investment firms, auditors, lawyers, nominated advisors, analysts etc.

The market transactions are carried out with the same methodology as in the Regulated Market, using the existing electronic trading system of the Cyprus Stock Exchange. Companies listed on the ECM also enjoy the advantages of the tax regime in Cyprus, which can be exploited by issuers and investors such as non-payment of tax on capital gains, elimination of sales tax (from 2.1.14) etc.

In the ECM market 44 Nominated Advisors are registered: 9 of these are Cyprus Investment Firms, 17 Audit Firms, 15 Law Firms, 2 ASPs (Administrative Services Providers) and one Nominated Advisor from a member state.

A considerable number of Nominated Advisors are examining the listing of companies interested to list on the ECM. These companies are either from Cyprus or abroad, focusing mainly on new business and innovation sectors. This perspective has broader positive implications as it provides added value to the listed companies and the Cyprus economy, in general.

During 2014, five companies listed their titles on the ECM. These are: Globo Technologies UK Ltd (Bond), Mobile & Commerce Solutions Plc, Quality & Reliability UK Ltd (Bond), TrophyResort NYRT and Universal Golf Enterprises Plc. Additionally two companies have been approved by the CSE Council and soon they will be admitted. These are Greenox Ltd (Bond) and Lanitis Golf Public Co Ltd.

Finally, four companies have filed an application for listing their titles on the ECM of the Cyprus Stock Exchange. These are: Asmara Investment Public Company, Majulah Investment Public Company, Woolworth Commercial Centre Plc and NETinfo Plc.



### ACTIVITIES AND DEVELOPMENTS

**This column presents new activities of the CSE as well as its initiatives concerning the development of the market, the services and products provided, international co-operation and its activities in general.**



## **Consolidation of existing CSE markets**

### **Classification of listed companies in CSE markets**

The Cyprus Stock Exchange (CSE), in order to further upgrade the stock exchange and to be in line with modern developments in the European markets, decided to change the existing Markets, based on the power conferred by the Legislation, with a date of enforcement on Monday, April 20, 2015.

As from this date the new Regulatory Decision [KDP 379/2014 (as amended)] will come to force and the Regulated Markets of the CSE will be composed of the Main Market and the Alternative Market. Therefore, the Parallel, the Investment Companies, the Major Projects and the Shipping Markets will be abolished.

It is clarified that the Special Category Market and its subcategory, the Special Characteristics Market, are abolished and the new "Supervision Market" will be introduced, to which the issuers of the Main and the Alternative Market will be transferred if they do not comply with certain obligations.

It is noted that the Government Bonds Market, the Corporate Bonds and the Collective Investment Schemes remain as they are.

The CSE Council based on the new Regulatory Decisions KDP 379/2014 and the data of the companies including the Auditors' Report in the annual results of each company for the year ended 31/12/2013, evaluated each listed company separately. Based on the above, the Council decided to classify the companies in the Markets as contained in Annex I below. It is noted that 31 companies are presented with marking (Σ) in their Trading Market under paragraph 2.2.6 of KDP 379/2014 (as amended by KDP 69/2015), while 19 companies are presented in the Supervision Market for most of which the trading of their titles has been suspended due to their failure to comply with their continuous obligations (note that for a number of companies in the Supervision Market, the approval of the SEC for the delisting of their titles has been requested).

Note that the reasons for which the titles of the specific issuers in the attached Annex are presented with a (Σ) are:

- ◆ Failure to abide by the continuous obligations of the market that the issuer is listed in, except the issue of its financial statements (eg capital dispersion to public)
- ◆ In the Auditors' Report on the Financial Statements there is a qualified opinion (except in cases of qualified opinion in respect of the issuer's ability to continue as a going concern, which in this case the issuer's titles are transferred to the Supervision Market)
- ◆ In the Auditors' Report on the Financial Statements there is an Emphasis of Matter. Note that where reference is made to the Emphasis of Matter in the attached list, this relates to an emphasis of matters in the Auditors' Report on the Financial Statements in relation to the issuer's ability to continue as a going concern, or emphasis of matter in relation to significant uncertainty.

**continues at the next page**



#### **ACTIVITIES AND DEVELOPMENTS**

**This column presents new activities of the CSE as well as its initiatives concerning the development of the market, the services and products provided, international co-operation and its activities in general.**





## Consolidation of existing CSE markets

### Classification of listed companies in CSE markets

We also attach (Annex II), the Council's Decision for the periods of the trading methods in the Markets, which will apply from April 20, 2015. An announcement regarding variations that will occur in the Price Indices will be issued shortly. Similar changes will occur in the Trading Rules in view of these differentiations, which will be published in the Gazette.

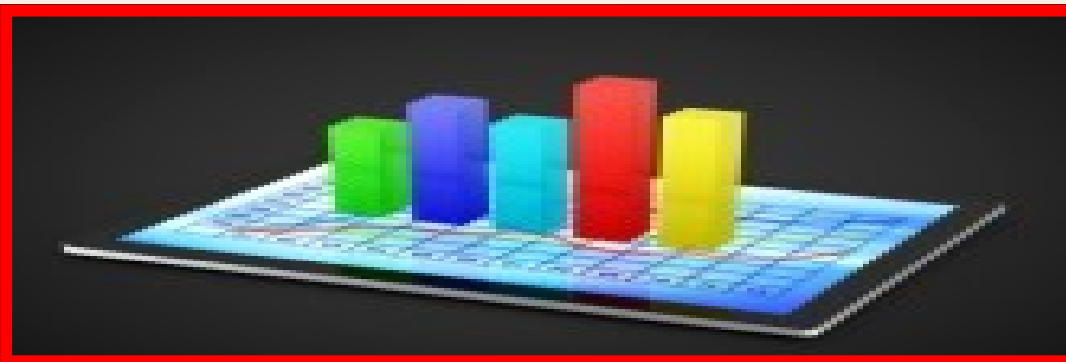
The consolidation of the existing markets and the classification of companies in the CSE Markets as well as the new Regulatory Decision (KPD 379/2014 as amended), will be implemented on April 20, 2015 as mentioned above. From this date, the Regulatory Decision 326/2009 (as amended), which was issued regarding the CSE markets, the ongoing obligations of issuers, the rights and the annual subscriptions, is abolished.

Enclose: **Annex I**  
**Annex II**

#### Annex I

#### Classification of listed companies in markets of Cyprus Stock Exchange

MAIN MARKET		
COMPANY		MARKING GROUNDS
1.	Bank of Cyprus Public Company Ltd (Σ)	Qualified opinion – Emphasis of matter
2.	Hellenic Bank Public Company Ltd	
3.	Logicom Public Ltd	
4.	A. Tsokkos Hotels Public Ltd	
5.	Louis PLC (Σ)	Emphasis of matter
6.	Demetra Investment Public Ltd	
7.	Cytrustees Investment Public Company Ltd	
8.	Laiki Capital Public Co Ltd	



#### ACTIVITIES AND DEVELOPMENTS

**This column presents new activities of the CSE as well as its initiatives concerning the development of the market, the services and products provided, international co-operation and its activities in general.**



## Consolidation of existing CSE markets

### Classification of listed companies in CSE markets

ALTERNATIVE MARKET		
COMPANY		MARKING GROUNDS
1.	Agros "Development" Company Public Ltd	
2.	Amathus Public Ltd	
3.	Atlantic Insurance Company Public Ltd	
4.	Blue Island Plc	
5.	Constantinou Bros Hotels Public Company Ltd	
6.	The Cyprus Cement Public Company Ltd	
7.	C.C.C. Tourist Enterprises Public Company Ltd	
8.	Cyprus Forest Industries Public Ltd (Σ)	Emphasis of matter
9.	Chris Joannou Public Ltd	
10.	Cosmos Insurance Public Company Ltd	
11.	Toxotis Investments Public Ltd	
12.	Cyprus Trading Corporation Plc	
13.	C.T.O. Public Company Ltd (Σ)	Emphasis of matter
14.	Dimco Plc (Σ)	Emphasis of matter
15.	Ellinas Finance Public Company Ltd	
16.	Cyventure Capital Public Company Ltd	
17.	Alkis H. Hadjikyriacos (Frou-Frou Biscuits) Public Ltd	
18.	Renos Hadjiioannou Farm Public Company Ltd	
19.	Karaolis Group Public Ltd	
20.	KEO Plc (Σ)	Emphasis of matter
21.	K + G Complex Public Company Ltd	
22.	Kronos Press Agency Public Company Ltd	
23.	Minerva Insurance Company Public Ltd	
24.	Mallouppas & Papacostas Public Co Ltd	
25.	Modestou Sound & Vision Public Company Ltd	
26.	Philoktimatiki Public Ltd	
27.	Pierides Holdings Plc	
28.	Petrolina (Holdings) Public Ltd	
29.	Pandora Investments Public Ltd	
30.	Royal Highgate Public Company Ltd	
31.	Salamis Tours (Holdings) Public Ltd	
32.	Stademos Hotels Plc	

continues at the next page



#### ACTIVITIES AND DEVELOPMENTS

**This column presents new activities of the CSE as well as its initiatives concerning the development of the market, the services and products provided, international co-operation and its activities in general.**



## Consolidation of existing CSE markets

### Classification of listed companies in CSE markets

33.	Top Kinisis Travel Public Ltd (Σ)	Emphasis of matter
34.	Vision International People Group Public Ltd	
35.	Actibond Growth Fund Public Company Ltd	
36.	A&P (Andreou & Paraskevaides) Enterprises Public Company Ltd	
37.	Apollo Investment Fund Plc	
38.	Ermes Department Stores Plc	
39.	G.A.P. Vassilopoulos Public Ltd	
40.	Karyes Investment Public Company Ltd	
41.	K. Kythreotis Holdings Public Ltd	
42.	Lordos Hotels (Holdings) Public Ltd	
43.	Lordos United Plastics Public Ltd	
44.	Mitsides Public Company Ltd	
45.	Vassiliko Cement Works Public Company Ltd	
46.	Interfund Investments Plc	
47.	Unigrowth Investments Public Ltd (Σ)	Emphasis of matter
48.	Harvest Capital Management Public Ltd (Σ)	Qualified opinion and emphasis of matter
49.	Ishis Investment Public Ltd (Σ)	Qualified opinion and emphasis of matter
50.	Woolworth (Cyprus) Properties Plc (Σ)	Dispersion issue
51.	Ch. Charilaou Group Plc (Σ)	Dispersion issue
52.	Dome Investments Public Company Ltd (Σ)	Dispersion issue
53.	Nemesis Contracting Public Company Ltd (Σ)	Dispersion issue
54.	Rolandos Enterprises Public Ltd (Σ)	Dispersion issue
55.	USB Bank Plc (Σ)	Emphasis of matter and dispersion issue
56.	Aiantas Investments Public Ltd (Σ)	Qualified opinion and emphasis of matter
57.	Regallia Holdings & Investments Public Ltd (Σ)	Qualified opinion and emphasis of matter
58.	Claridge Public Ltd (Σ)	Emphasis of matter
59.	Display Art Plc (Σ)	Emphasis of matter
60.	Leptos Calypso Hotels Public Ltd (Σ)	Emphasis of matter
61.	SFS Group Public Company Ltd (Σ)	Emphasis of matter

continues at the next page



#### ACTIVITIES AND DEVELOPMENTS

**This column presents new activities of the CSE as well as its initiatives concerning the development of the market, the services and products provided, international co-operation and its activities in general.**



## Consolidation of existing CSE markets

### Classification of listed companies in CSE markets

62.	Triaina Investments Public Company Ltd (Σ)	Emphasis of matter
63.	A.L. Prochoice Group Public Ltd (Σ)	Emphasis of matter
64.	CPI Holdings Public Ltd (Σ)	Emphasis of matter
65.	Exelixis Investment Public Ltd (Σ)	Emphasis of matter
66.	Liberty Life Insurance Public Company Ltd (Σ)	Emphasis of matter
67.	L. P. Transbeton Public Ltd (Σ)	Qualified opinion and emphasis of matter
68.	Primetel Plc (Σ)	Emphasis of matter
69.	Unifast Finance & Investments Public Company Ltd (Σ)	Emphasis of matter
70.	CLR Investment Fund Public Ltd (Σ)	Emphasis of matter

SURVEILLANCE MARKET		
COMPANY		MARKING GROUNDS
1.	Sea Star Capital Plc	Qualified opinion and emphasis of matter
2.	D & M Telemarketing Public Ltd	Suspended
3.	Dodoni Portfolio Investments Public Company Ltd	Suspended
4.	Elma Holdings Public Company Ltd	Suspended
5.	Jupiter Portfolio Investments Public Company Ltd	Suspended
6.	K. Athienitis Contractors Developers Public Ltd	Suspended
7.	Phil. Andreou Public Ltd	Suspended
8.	Charilaos Apostolides Public Ltd	Suspended - SEC's approval for delisting requested
9.	Ceelfloor Public Company Ltd	Suspended - SEC's approval for delisting requested
10.	Cyprint Plc	Suspended - SEC's approval for delisting requested
11.	Empire Capital Investments Public Ltd	Suspended - SEC's approval for delisting requested
12.	Finikas Ammochostou Plc	Suspended - SEC's approval for delisting requested
13.	Firstdelos Group Plc	Suspended - SEC's approval for delisting requested
14.	Laser Investment Group Plc	Suspended - SEC's approval for delisting requested
15.	O.C. Options Choice Plc	Suspended - SEC's approval for delisting requested

continues at the next page



#### ACTIVITIES AND DEVELOPMENTS

**This column presents new activities of the CSE as well as its initiatives concerning the development of the market, the services and products provided, international co-operation and its activities in general.**





## Consolidation of existing CSE markets

### Classification of listed companies in CSE markets

16.	SAFS Holdings Public Ltd	Suspended - SEC's approval for delisting requested
17.	Stario Portfolio Investments Public Company Ltd	Suspended - SEC's approval for delisting requested
18.	Pipis Bros Farm Public Company Ltd	Suspended - SEC's approval for delisting requested
19.	Karkotis Manufacturing & Trading Public Ltd	Suspended - SEC's approval for delisting requested

It is noted that the Bonds of Alpha Bank Cyprus Ltd will trade with a (Σ) marking due to an emphasis of matter in the Auditors' Report in the Annual Statements for the year ended 31/12/2013.

#### Annex II

#### Decision of the Council of the Cyprus Stock Exchange for the Periods of the Trading Methods in the Main Market, the Parallel Market, the Supervision Market, the Bonds Market, the Depository Receipts Market, the Emerging Companies Market and the Depository Receipts Market (New Market)

The CSE Council determines, pursuant to Paragraphs 4.1.2, 4.2.2, 4.3.2 and 4.4.2 of the Trading Rules, the Periods of each Trading Method in its Markets. The above decision is available through the CSE web site on the following link:<http://www.cse.com.cy/en-GB/legal-framework/current-legislation/basic-law/>



#### ACTIVITIES AND DEVELOPMENTS

**This column presents new activities of the CSE as well as its initiatives concerning the development of the market, the services and products provided, international co-operation and its activities in general.**



## Start of calculation of Financial Index for the Emerging Companies Market of the CSE

The Cyprus Stock Exchange (CSE) would like to inform investors and market participants that from Monday, April 20, 2015, is implemented and therefore begins the calculation of the Financial Index for the Emerging Companies Market of the CSE. The Index will be used as a Benchmark for the yields of the shares of financial activity of the companies listed in the Emerging Companies Market of the CSE. This Index provides a measure of evaluation of the performance of companies operating in the financial sector of the specific market, which includes Financial Services, Banking, Insurance, and other related services.

For the purpose of this index, the Industry Classification Benchmark (ICB) of FTSE is taken into account, and especially companies active in the field (Financials-8000) of the ICB.

This Index:

- Will have 1000 (one thousand) points as a basis
- Will use transaction prices that have been executed
- Will be based on the Laspayers formula for its calculation
- Will be calculated real time on a daily basis

The companies that will participate in the Index are the following:

A/A	English Symbol	Greek Symbol	English Name of Company
1.	STC	ΣΤΣΙ	GLOBAL DIGITAL SERVICES PLC
2.	ORCA	ΟΡΚΑ	ORCA INVESTMENT PLC
3.	CBAM	ΚΩΑΜ	CONSTANTINOU BROS PROPERTIES PLC
4.	ITTL	ΙΤΤΑ	ITTL TRADE TOURIST & LEISURE PARK PLC
5.	INLE	ΙΝΛΕ	INTERNATIONAL LIFE GENERAL INSURANCE S.A.
6.	EHMI	ΕΧΜΙ	ECHMI S.A. INVESTMENT CONSULTANTS
7.	KERV	ΚΕΡΒ	KERVERUS HOLDING IT (CYPRUS) PLC
8.	TANDA	ΤΑΝΤΑ	TAN-DA HOLDINGS PUBLIC COMPANY LTD
9.	LBVHO	ΛΒΥΗΟ	LBV HOLDING PUBLIC COMPANY LTD
10.	MOBC	ΜΟΒΚ	MOBILE & COMMERCE SOLUTIONS PLC
11.	UGE	ΥΓΚ	UNIVERSAL GOLF ENTERPRISES PLC
12.	INLI	ΙΝΛΙ	INTERLIFE GENERAL INSURANCE S.A.



### ACTIVITIES AND DEVELOPMENTS

**This column presents new activities of the CSE as well as its initiatives concerning the development of the market, the services and products provided, international co-operation and its activities in general.**



## Differentiation in Composition of Price Indices of the CSE

On 31<sup>st</sup> March 2015, the Cyprus Stock Exchange (CSE) informed investors and market participants that in the context of the consolidation of the Regulated Markets of the Stock Exchange, the composition of indices of the listed securities on the CSE will be differentiated, in an effort to assess the trends of the stock market in the best possible way.

The differentiated Management Rules of the CSE Indices, as well as the changes in the composition of the Indices affected by the consolidation of the markets, will take effect from Monday, April 20, 2015. These Rules contain details of the methodology and procedures concerning the management of CSE indices, taking into account the consolidation of the markets. The Management Rules of the Indices are available on the CSE website, at the following web link: <http://www.cse.com.cy/en-GB/regulated-market/market-indices/indices/>

It is noted that the Index of the CSE Main Market, as well as in the Index of CSE Alternative Market will respectively include shares of companies trading on the Main and Alternative Market.

The shares of companies trading on the Main and Alternative Market will participate on the CSE General Index. The Parallel Market Index of the CSE published today will be abolished on April 20, 2015.

The Investment Companies Index will continue to be calculated as it will include the shares of companies operating in the field of Investment Companies of the CSE. Note that the shares of companies trading in the "Surveillance Market" or are under suspension do not participate in any Index.

See below the composition of the affected Price Indices taking into account the consolidation of the markets, based on existing data as they will take effect from Monday, April 20, 2015.

### CSE General Index (Main and Alternative Market titles)

English Symbol	Greek Symbol	Name of Company	Adjusted Free Float %
ACT	ΑΚΕΠ	ACTIBOND GROWTH FUND PUBLIC COMPANY LTD	29
AGRO	ΑΓΡΟ	AGROS DEVELOPMENT COMPANY "PROODOS" PUBLIC LTD	24
AIAS	ΑΙΕΠ	AIAS INVESTMENT PUBLIC LTD	48
ANC	ΑΜΑΘ	AMATHUS PUBLIC LTD	25
APE	ΑΝΠΑ	A&P (ANDREOU & PARASKEVAIDES) ENTERPRISES PUBLIC COMPANY LTD	25
APOL	ΑΠΕΠ	APOLLO INVESTMENT FUND PLC	64
ATL	ΑΤΑΣ	ATLANTIC INSURANCE COMPANY PUBLIC LTD	20
BLUE	ΜΠΛΕ	BLUE ISLAND PLC	24
BOCY	ΤΡΚΥ	BANK OF CYPRUS PUBLIC COMPANY LTD	68
CCC	ΚΕΤΣ	THE CYPRUS CEMENT PUBLIC COMPANY LTD	30
CCCT	ΣΙΤΟ	C.C.C. TOURIST ENTERPRISES PUBLIC COMPANY LTD	17

continues at the next page



### ACTIVITIES AND DEVELOPMENTS

**This column presents new activities of the CSE as well as its initiatives concerning the development of the market, the services and products provided, international co-operation and its activities in general.**



## Differentiation in Composition of Price Indices of the CSE

CFI	ΔΒΚΔ	CYPRUS FOREST INDUSTRIES PUBLIC LTD	32
CJ	ΙΟΑΝ	CHRIS JOANNOU PUBLIC LTD	35
CLA	ΚΛΑΡ	CLARIDGE PUBLIC LTD	28
CLL	ΣΛΕΠ	CLR INVESTMENT FUND PUBLIC LTD	63
COS	ΚΟΣΑ	COSMOS INSURANCE PUBLIC COMPANY LTD	36
COV	ΤΟΕΠ	ΤΟΧΟΤΙΣ INVESTMENTS PUBLIC LTD	38
CTO	ΣΤΟ	C.T.O. PUBLIC COMPANY LTD	30
CYTR	ΣΑΕΠ	CYTRUSTEES INVESTMENT PUBLIC COMPANY LTD	42
DEM	ΔΗΕΠ	DEMETRA INVESTMENT PUBLIC LTD	80
DES	ΝΤΙΜ	DIMCO PLC	20
DISP	ΝΤΙΑ	DISPLAY ART PLC	32
ELF	ΕΛΛΗ	ELLINAS FINANCE PUBLIC COMPANY LTD	28
ERME	ΕΡΜΕ	ERMES DEPARTMENT STORES PLC	21
EXIN	ΕΞΕΠ	EXELIXI INVESTMENT PUBLIC LTD	25
FBI	ΦΡΟΥ	ALKIS H. HADJIKYRIACOS (FROU-FROU BISCUITS) PUBLIC LTD	19
FRH	ΡΕΝΟ	RENOS HATZIOANNOU FARM PUBLIC COMPANY LTD	67
FWW	ΓΟΥΛ	WOOLWORTH (CYPRUS) PROPERTIES PLC	23
GAP	ΒΑΣΙ	G.A.P. VASSILOPOULOS PUBLIC LTD	25
HB	ΕΛΗΤ	HELLENIC BANK PUBLIC COMPANY LTD	37
HCM	ΧΑΕΠ	HARVEST CAPITAL MANAGEMENT PUBLIC LTD	47
INF	ΙΝΕΠ	INTERFUND INVESTMENTS PLC	46
ISXI	ΙΞΕΠ	ISXIS INVESTMENT PUBLIC LTD	45
KAR	ΚΑΕΠ	KARYES INVESTMENT PUBLIC COMPANY LTD	49
KARA	ΚΑΡ	KARAOLIS GROUP PUBLIC LTD	58
KEO	ΚΕΟ	KEO PLC	33
KG	ΚΚΟΜ	K + G COMPLEX PUBLIC COMPANY LTD	17
KRO	ΚΡΟΝ	KRONOS PRESS DISTRIBUTION AGENCY PUBLIC COMPANY LTD	26
KYTH	ΚΥΘΡ	K. KYTHREOTIS HOLDINGS PUBLIC LTD	15
LCH	ΛΕΠΤ	LEPTOS CALYPSO HOTELS PUBLIC LTD	35
LHH	ΛΟΞΕ	LORDOS HOTELS (HOLDINGS) PUBLIC LTD	23
LI	ΛΕΠΕ	LAIKI CAPITAL PUBLIC CO LTD	32
LOG	ΛΟΤΖ	LOGICOM PUBLIC LTD	36
LPL	ΛΟΡΔ	LORDOS UNITED PLASTICS PUBLIC LTD	23
LUI	ΛΟΥΗ	LOUIS PLC	32
MINE	ΜΙΝΕ	MINERVA INSURANCE COMPANY PUBLIC LTD	49
MIT	ΜΙΤΣ	MITSIDES PUBLIC COMPANY LTD	23
MPT	ΜΑΠΑ	MALLOUPPAS & PAPACOSTAS PUBLIC CO LTD	19
MSV	ΜΟΔΕ	MODESTOU SOUND & VISION PUBLIC COMPANY LTD	29
PES	ΦΙΛΟ	PHILOKTIMATI KI PUBLIC LTD	26
PGE	ΠΙΕΡ	PIERIDES HOLDINGS PLC	37
PHL	ΛΙΝΑ	PETROLINA (HOLDINGS) PUBLIC LTD	34
PND	ΠΑΝΔ	PANDORA INVESTMENTS PUBLIC LTD	36
PROP	ΠΡΟΠ	A.L. PROCHOICE GROUP PUBLIC LTD	62
REG	ΡΕΕΠ	REGALLIA HOLDINGS & INVESTMENTS PUBLIC LTD	66
ROY	ΡΟΧΑ	ROYAL HIGHGATE PUBLIC COMPANY LTD	26
SAL	ΣΑΛΑ	SALAMIS TOURS (HOLDINGS) PUBLIC LTD	40
SFS	ΕΣΕΦ	SFS GROUP PUBLIC COMPANY LTD	64
SHL	ΣΤΑΔ	STADEMOS HOTELS PLC	23

continues at the next page



### ACTIVITIES AND DEVELOPMENTS

This column presents new activities of the CSE as well as its initiatives concerning the development of the market, the services and products provided, international co-operation and its activities in general.



## Differentiation in Composition of Price Indices of the CSE

TCAP	ΤΚΕΠ	TRIENA INVESTMENT PUBLIC COMPANY LTD - CAPITAL	16
TINC	ΤΕΕΠ	TRIENA INVESTMENT PUBLIC COMPANY LTD - INCOME	16
TINT	ΤΔΕΠ	TRIENA INVESTMENT PUBLIC COMPANY LTD - INTERNATIONAL	16
TOP	ΤΟΚΙ	TOP KINISIS TRAVEL PUBLIC LTD	32
TRB	ΤΡΑΝ	L.P. TRANSBETON PUBLIC LTD	25
TSH	ΤΣΟΚ	A. TSOKKOS HOTELS PUBLIC LTD	29
UFI	ΦΑΣΤ	UNIFAST FINANCE & INVESTMENTS PUBLIC COMPANY LTD	24
UNI	ΠΕΠ	UNIGROWTH INVESTMENTS PUBLIC LTD	17
VCW	ΤΣΙΒ	VASSILICO CEMENT WORKS PUBLIC COMPANY LTD	20
VIP	ΒΙΖΝ	VISION INTERNATIONAL PEOPLE GROUP PUBLIC LTD	25

### CSE Main Market Index

English Symbol	Greek Symbol	Name of Company	Adjusted Free Float %
BOCY	ΤΡΚΥ	BANK OF CYPRUS PUBLIC COMPANY LTD	68
CYTR	ΣΑΕΠ	CYTRUSTEES INVESTMENT PUBLIC COMPANY LTD	42
DEM	ΔΗΕΠ	DEMETRA INVESTMENT PUBLIC LTD	80
HB	ΕΛΗΤ	HELLENIC BANK PUBLIC COMPANY LTD	37
LI	ΛΕΠΕ	LAIKI CAPITAL PUBLIC CO LTD	32
LOG	ΛΟΤΖ	LOGICOM PUBLIC LTD	36
LUI	ΛΟΥΗ	LOUIS PLC	32
TSH	ΤΣΟΚ	A. TSOKKOS HOTELS PUBLIC LTD	29

### CSE Alternative Market Index

English Symbol	Greek Symbol	Name of Company	Adjusted Free Float %
ACT	ΑΚΕΠ	ACTIBOND GROWTH FUND PUBLIC COMPANY LTD	29
AGRO	ΑΓΡΟ	AGROS DEVELOPMENT COMPANY "PROODOS" PUBLIC LTD	24
AIAS	ΑΙΕΠ	AIAS INVESTMENT PUBLIC LTD	48
ANC	ΑΜΑΘ	AMATHUS PUBLIC LTD	25
APE	ΑΝΠΑ	A&P (ANDREOU & PARASKEVAIDES) ENTERPRISES PUBLIC COMPANY LTD	25
APOL	ΑΠΕΠ	APOLLO INVESTMENT FUND PLC	64
ATL	ΑΤΑΣ	ATLANTIC INSURANCE COMPANY PUBLIC LTD	20
BLUE	ΜΠΛΕ	BLUE ISLAND PLC	24
CBH	ΚΩΝΣ	CONSTANTINOU BROS HOTELS PUBLIC COMPANY LTD	13
CCC	ΚΕΤΣ	THE CYPRUS CEMENT PUBLIC COMPANY LTD	30
CCCT	ΣΙΤΟ	C.C.C. TOURIST ENTERPRISES PUBLIC COMPANY LTD	17
CFI	ΔΒΚΔ	CYPRUS FOREST INDUSTRIES PUBLIC LTD	32
CHCH	ΧΑΣΕ	CH. CHARILAOU GROUP PLC	13
CJ	ΙΟΑΝ	CHRIS JOANNOU PUBLIC LTD	35
CLA	ΚΛΑΡ	CLARIDGE PUBLIC LTD	28
CLL	ΣΛΕΠ	CLR INVESTMENT FUND PUBLIC LTD	63

continues at the next page



### ACTIVITIES AND DEVELOPMENTS

This column presents new activities of the CSE as well as its initiatives concerning the development of the market, the services and products provided, international co-operation and its activities in general.





## Differentiation in Composition of Price Indices of the CSE

COS	ΚΟΣΑ	COSMOS INSURANCE PUBLIC COMPANY LTD	36
COV	ΤΟΞΠ	TOXOTIS INVESTMENTS PUBLIC LTD	38
CPIH	ΚΕΑΕ	CPI HOLDINGS PUBLIC LTD	13
CTC	ΣΤΣΔ	CYPRUS TRADING CORPORATION PLC	13
CTO	ΣΤΟ	C.T.O. PUBLIC COMPANY LTD	30
DES	NTIM	DIMCO PLC	20
DISP	NTIA	DISPLAY ART PLC	32
ELF	ΕΛΛΗ	ELLINAS FINANCE PUBLIC COMPANY LTD	28
ERME	ΕΡΜΕ	ERMES DEPARTMENT STORES PLC	21
EXE	ΒΕΝΤ	CYVENTURE CAPITAL PUBLIC COMPANY LTD	13
EXIN	ΕΞΕΠ	EXELIXI INVESTMENT PUBLIC LTD	25
FBI	ΦΡΟΥ	ALKIS H. HADJIKYRIACOS (FROU-FROU BISCUITS) PUBLIC LTD	19
FRH	ΡΕΝΟ	RENOS HATZIOANNOU FARM PUBLIC COMPANY LTD	67
FWW	ΓΟΥΛ	WOOLWORTH (CYPRUS) PROPERTIES PLC	23
GAP	ΒΑΣΙ	G.A.P. VASSILOPOULOS PUBLIC LTD	25
HCM	ΧΑΕΠ	HARVEST CAPITAL MANAGEMENT PUBLIC LTD	47
INF	ΙΝΕΠ	INTERFUND INVESTMENTS PLC	46
ISXI	ΙΞΕΠ	ISXIS INVESTMENT PUBLIC LTD	45
KAR	ΚΑΕΠ	KARYES INVESTMENT PUBLIC COMPANY LTD	49
KARA	ΚΑΡ	KARAOLIS GROUP PUBLIC LTD	58
KEO	ΚΕΟ	KEO PLC	33
KG	ΚΚΟΜ	K + G COMPLEX PUBLIC COMPANY LTD	17
KRO	ΚΡΟΝ	KRONOS PRESS DISTRIBUTION AGENCY PUBLIC COMPANY LTD	26
KYTH	ΚΥΘΡ	K. KYTHREOTIS HOLDINGS PUBLIC LTD	15
LCH	ΛΕΠΤ	LEPTOS CALYPSO HOTELS PUBLIC LTD	35
LHH	ΛΟΞΕ	LORDOS HOTELS (HOLDINGS) PUBLIC LTD	23
LPL	ΛΟΡΔ	LORDOS UNITED PLASTICS PUBLIC LTD	23
MINE	ΜΙΝΕ	MINERVA INSURANCE COMPANY PUBLIC LTD	49
MIT	ΜΙΤΣ	MITSIDES PUBLIC COMPANY LTD	23
MPT	ΜΑΠΑ	MALLOUPPAS & PAPACOSTAS PUBLIC CO LTD	19
MSV	ΜΟΔΕ	MODESTOU SOUND & VISION PUBLIC COMPANY LTD	29
PES	ΦΙΛΟ	PHILOKTIMATIKI PUBLIC LTD	26
PGE	ΠΙΕΡ	PIERIDES HOLDINGS PLC	37
PHL	ΛΙΝΑ	PETROLINA (HOLDINGS) PUBLIC LTD	34
PND	ΠΑΝΔ	PANDORA INVESTMENTS PUBLIC LTD	36
PROP	ΠΡΟΠ	A.L. PROCHOICE GROUP PUBLIC LTD	62
PTL	ΠΤΕΛ	PRIMETEL PLC	13
REG	ΡΕΕΠ	REGALLIA HOLDINGS & INVESTMENTS PUBLIC LTD	66
ROY	ΡΟΧΑ	ROYAL HIGHGATE PUBLIC COMPANY LTD	26
SAL	ΣΑΛΑ	SALAMIS TOURS (HOLDINGS) PUBLIC LTD	40
SFS	ΕΣΕΦ	SFS GROUP PUBLIC COMPANY LTD	64
SHL	ΣΤΑΔ	STADEMOS HOTELS PLC	23
TCAP	ΤΚΕΠ	TRIENA INVESTMENT PUBLIC COMPANY LTD - CAPITAL	16
TINC	ΤΕΕΠ	TRIENA INVESTMENT PUBLIC COMPANY LTD - INCOME	16
TINT	ΤΔΕΠ	TRIENA INVESTMENT PUBLIC COMPANY LTD - INTERNATIONAL	16
TOP	ΤΟΚΙ	TOP KINISIS TRAVEL PUBLIC LTD	32
TRB	ΤΡΑΝ	L.P. TRANSBETON PUBLIC LTD	25

continues at the next page



### ACTIVITIES AND DEVELOPMENTS

This column presents new activities of the CSE as well as its initiatives concerning the development of the market, the services and products provided, international co-operation and its activities in general.



## Differentiation in Composition of Price Indices of the CSE

UFI	ΦΑΣΤ	UNIFAST FINANCE & INVESTMENTS PUBLIC COMPANY LTD	24
UNI	ΓΙΕΠ	UNIGROWTH INVESTMENTS PUBLIC LTD	17
VCW	ΤΣΙΒ	VASSILICO CEMENT WORKS PUBLIC COMPANY LTD	20
VIP	BIZN	VISION INTERNATIONAL PEOPLE GROUP PUBLIC LTD	25



### Investment Companies Market Index

English Symbol	Greek Symbol	Name of Company	Adjusted Free Float %
ACT	ΑΚΕΠ	ACTIBOND GROWTH FUND PUBLIC COMPANY LTD	29
AIAS	ΑΙΕΠ	AIAS INVESTMENT PUBLIC LTD	48
APOL	ΑΠΕΠ	APOLLO INVESTMENT FUND PLC	64
CYTR	ΣΑΕΠ	CYTRUSTEES INVESTMENT PUBLIC COMPANY LTD	42
DEM	ΔΗΕΠ	DEMETRA INVESTMENT PUBLIC LTD	80
HCM	ΧΑΕΠ	HARVEST CAPITAL MANAGEMENT PUBLIC LTD	47
INF	ΙΝΕΠ	INTERFUND INVESTMENTS PLC	46
ISXI	ΙΣΕΠ	ISXIS INVESTMENT PUBLIC LTD	45
KAR	ΚΑΕΠ	KARYES INVESTMENT PUBLIC COMPANY LTD	49
REG	ΡΕΕΠ	REGALLIA HOLDINGS & INVESTMENTS PUBLIC LTD	66
UNI	ΓΙΕΠ	UNIGROWTH INVESTMENTS PUBLIC LTD	17



### ACTIVITIES AND DEVELOPMENTS

This column presents new activities of the CSE as well as its initiatives concerning the development of the market, the services and products provided, international co-operation and its activities in general.



## Reverse of Shares / Debt Capital (Split)

**Hellenic Bank Public Company Ltd.** On the 2<sup>nd</sup> March 2015, the Cyprus Stock Exchange announced that the issued share capital of “Hellenic Bank Public Company Ltd”, which amounted to €93.883.959 divided into 9.388.395.900 shares of nominal value €0.01 has been formed after the reverse split (increase in nominal value of the share from €0.01 to €0.50) carried out on February 27, 2015 to €93.883.959 divided into 187.767.918 shares of nominal value €0.50. This change has been effective from March 4, 2015. The shares trade under the new ISIN Code CY0105570119 and with a readjusted trading price.

## Listing of Government Titles / Incorporation of additional Treasury Bills

**52 – Weeks Treasury Bills.** On 4<sup>th</sup> of March 2015, the Cyprus Stock Exchange announced that following a briefing by the Ministry of Finance and further to its announcement dated 10/11/2014, it has updated its records for the incorporation of 4 additional Treasury Bills, 2<sup>nd</sup> Issue Series 2014 (12/11/2014-11/11/2015) of nominal value €1000 each of total value €4.000 under the code ΓΔ52B14/ TB52B14. Following this action, the Bills amounted at 55.020 of total value 55.020.000. Their trading started on Thursday, March 5, 2015.

## Delisting of Titles

**Charilaos Apostolides Public Ltd.** On 4<sup>th</sup> March 2015, the CSE Council has requested the approval of the Cyprus Securities and Exchange Commission, based on the provisions of its Law, to delist the titles of Charilaos Apostolides Public Ltd. The decision of the CSE Council for the delisting of the Company's titles has been taken pursuant to the power conferred by Article 178(1) of the CSE Law since there are no longer requirements for the proper operation of the stock market on the titles of the Company and its continues obligations are not met, putting the interests of the investors at risk.

Specifically, it was noted that the decision of the CSE Council for the delisting of the Company's titles has been taken since Charilaos Apostolides Public Ltd has not complied with its obligation to submit and publish:

- a) The indicative results for 2013
- b) The Annual Financial Report for the year ended 31/12/2013
- c) The Six-Month Report for the period ended 30/6/2014

in violation of the Stock Exchange Law and KDP326 / 2009 (as amended).

It was noted that until the decision is taken by the Cyprus Securities and Exchange Commission, its titles will continue to be under a suspension of trading.



## DECISIONS OF THE COUNCIL OF THE CYPRUS STOCK EXCHANGE

This column presents the decisions of the CSE's Council on various issues during the month under review.



## Delisting of Titles

**D & M Telemarketing Public Ltd, Elma Holdings Public Company Ltd, Dodoni Portfolio Investments Public Company Ltd and Jupiter Portfolio Investments Public Company Ltd.** On 19<sup>th</sup> of March 2015, the CSE Council has requested the approval of the Cyprus Securities and Exchange Commission, under the provisions of its Legislation, for the delisting of the titles of:

- D & M Telemarketing Public Ltd
- Elma Holdings Public Company Ltd
- Dodoni Portfolio Investments Public Company Ltd
- Jupiter Portfolio Investments Public Company Ltd

The Council has taken this decision in accordance with the powers conferred by Article 178 (1) of the Stock Exchange Law, as it considered that there are no longer requirements for the smooth operation of the stock market on the titles of the companies and the significant continuous or periodical obligations are not observed, pursuant to the Law and the Regulatory Provisions of the Stock Exchange [(KDP 326/2009) (as amended)]. The CSE circular to the listed companies, no. 15-2012 dated November 9, 2012 is relevant.

Specifically, it was noted that the decision of the CSE Council for the delisting of the titles of the above companies has been taken since they failed to meet their obligation for the submission and publication of:

- a) The Annual Financial Report for the year ended 31/12/2013,
- b) The Six-Month Financial Report for the period ended 30/6/2014

In addition, it was noted that the companies have not submitted their indicative results for the year ended 31/12/2014.

Moreover, based on the announcement of D & M Telemarketing Public Ltd dated March 2, 2015, the Court has ordered the dissolution of the company and the appointment of a temporary liquidator of its assets.

Until the decision of the Cyprus Securities and Exchange Commission is secured, the titles of the companies will continue to be under suspension of trading.

## Listing of Government Titles

**13 - week Treasury Bills.** On 5<sup>th</sup> March 2015, the Cyprus Stock Exchange announced that it has accepted the listing of 200.000 13-week Treasury Bills, 3rd Issue, Series 2015 (6/3/2015-5/6/2015) of nominal value €1000 each, of total value €200.000.000, which had resulted from an auction carried out on March 3, 2015. Their date of issue was March 6, 2015. The code of the above titles that listed in the Bonds' Market is ΓΔ13Γ15/ TB13C15. The Bills did not bear an interest rate. Their trading started on Friday, March 6, 2015.



### DECISIONS OF THE COUNCIL OF THE CYPRUS STOCK EXCHANGE

This column presents the decisions of the CSE's Council on various issues during the month under review.



## Suspension of Trading and Delisting of Government Titles

**150 - day Treasury Bills.** On 10<sup>th</sup> March 2015, the Cyprus Stock Exchange announced the suspension of trading of the 150-day Treasury Bills 1<sup>st</sup> Issue Series 2014 (17/10/2014 – 16/3/2015), under the code ΓΔ150HA14/ TB150DA14, from March 11, 2015 to March 13, 2015 (inclusive), that is, until the clearing of all transactions ahead of the delisting of the titles. The above Treasury Bills delisted on March 16, 2015.

**13-week Treasury Bills.** On 30<sup>th</sup> March 2015, the Cyprus Stock Exchange announced the suspension of trading of the 13-week Treasury Bills 1st Issue Series 2015 (7/1/2015 – 8/4/2015), under the code ΓΔ13A15 / TB13A15, from April 3, 2015 to April 7, 2015 (inclusive), that is, until the clearing of all transactions ahead of the delisting of the titles. The above Treasury Bills delisted on April 8, 2015.

## Cancellation of 200 bonds of Amathus Public Ltd

On the 16<sup>th</sup> of March 2015, the Cyprus Stock Exchange announced that, following an announcement of Amathus Public Ltd (AMGB/AMEX) dated 25/2/2015, it has proceeded with the cancellation of 200 bonds of nominal value €1.000, due to their purchase on 25/2/2015 by the Company. Following the cancellation, the total number of bonds has been reduced to 5.630. This reduction has been effective from Wednesday, March 18, 2015.

## Easter Holidays

On 26<sup>th</sup> March 2015, the Cyprus Stock Exchange announced that following the holidays set by the Target / Target 2, Trans-European, Automated, Real-time Gross Settlement Express Transfer System, Friday, April 03, 2015 and Monday, April 6, 2015 there will be no trading sessions and clearing / settlement of transactions.

Also, it was noted that on Friday, April 10, 2015, on Monday 13 and Tuesday, 14, 2015, the dates on which Easter is celebrated in Cyprus, the Stock Exchange will be closed for the holidays and no sessions and clearing / settlement of transactions will be carried out.



## DECISIONS OF THE COUNCIL OF THE CYPRUS STOCK EXCHANGE

This column presents the decisions of the CSE's Council on various issues during the month under review.





## Non - issue and submission of the indicative results

On 19<sup>th</sup> March 2015, the CSE Council, following the expiry of the period of submission (late February 2015) of the indicative results for the year ended December 31, 2014, (based on the provisions of Paragraph 5.2.4.5 of KDP 326/2009 of the Cyprus Stock Exchange) and implementing the Policy Decision with a Circular number 15/2012 dated 9/11/2012, announced that the following companies had not issued and published their indicative results for the year ended December 31, 2014:

- LIBERTY LIFE INSURANCE PUBLIC COMPANY LTD
- K. ATHIENITIS CONTRACTORS DEVELOPERS PUBLIC LTD
- ELMA HOLDINGS PUBLIC COMPANY LTD
- DODONI PORTFOLIO INVESTMENTS PUBLIC COMPANY LTD
- PHIL. ANDREOU PUBLIC LTD
- JUPITER PORTFOLIO INVESTMENTS PUBLIC COMPANY LTD
- D&M TELEMARTETING PUBLIC LTD
- CHARILAOS APOSTOLIDES PUBLIC LTD
- CYPRINT PLC
- FIRSTDELOS GROUP PLC
- CEILFLOOR PUBLIC COMPANY LTD
- FINIKAS AMMOCHOSTOU PLC
- EMPIRE CAPITAL INVESTMENTS PUBLIC LTD
- LASER INVESTMENT GROUP PLC
- O.C. OPTIONS CHOICE PLC
- SAFS HOLDINGS PUBLIC LTD
- STARIO PORTFOLIO INVESTMENTS
- PIPIS BROS FARM PUBLIC COMPANY LTD
- KARKOTIS MANUFACTURING & TRADING PUBLIC LTD

It was noted that the titles of Liberty Life Insurance Public Company Ltd will continue trading in the Special Category Market and with the implementation of the consolidation of the Markets on April 20, 2015 they will trade in the Surveillance Market unless the indicative results for the year ended 31/12/2014 are submitted by the company. With regard to the remaining companies, their titles are under suspension of trading and for a number of them the CSE has requested the approval of the Cyprus Securities and Exchange Commission for the delisting of their titles from the Cyprus Stock Exchange due to their failure to meet their continues obligations and following a decision by the CSE Council. The announcement of the Cyprus Stock Exchange dated March 9, 2015 is relevant.

**N.E.A.**  
Νεοαναπτυσσόμενων Εταιρειών Αγορά  
**Emerging Companies Market**  
**E.C.M.**

## Nominated advisor

«**SMC MED Trustees (CY) Ltd**». On 30<sup>th</sup> March 2015, the CSE Council, by decision dated 26/03/2015, has approved pursuant to paragraph 7.2 of KDP 326/2009, “SMC MED Trustees (CY) Ltd” as nominated advisor of the Emerging Companies Market of the CSE.

## Suspension of Trading

**TrophyResort Nyrt.** On 30<sup>th</sup> March 2015, the Cyprus Stock Exchange announced the suspension of the titles of TrophyResort Nyrt, since the proper functioning of the market as to the specific security is not safeguarded, as the issuer did not issue an announcement on the termination of its cooperation with the Nominated Advisor, which may affect the price of the security.

It was noted that issuers with listed securities in the Emerging Companies Market of the CSE should maintain a Nominated Advisor at all times.

The decision of the CSE will be valid from March 31, 2015 to April 24, 2015, unless the issuer complies with the obligation earlier.



## DECISIONS OF THE COUNCIL OF THE CYPRUS STOCK EXCHANGE

This column presents the decisions of the CSE's Council on various issues during the month under review.



**CSE** creates  
new opportunities  
for companies



**E.C.M.**

**Emerging Companies Market**

- WITH BENEFITS FOR COMPANIES
- WITH SIMPLIFIED LISTING REQUIREMENTS
- WITH LOW COST FOR BUSINESSES



**ΧΡΗΜΑΤΙΣΤΗΡΙΟ ΑΕΙΩΝ ΚΥΠΡΟΥ**

**CYPRUS STOCK EXCHANGE**

71-73 Lord Byron Avenue, 1096, Nicosia, Cyprus,

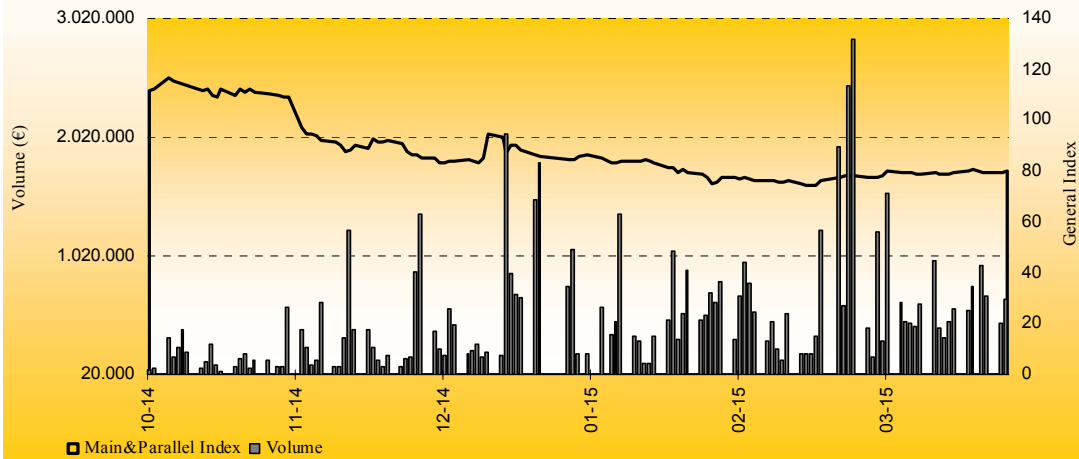
P.O.Box 25427, Nicosia, 1309, Cyprus

Tel.: +357 22712300, Fax: +357 22570308

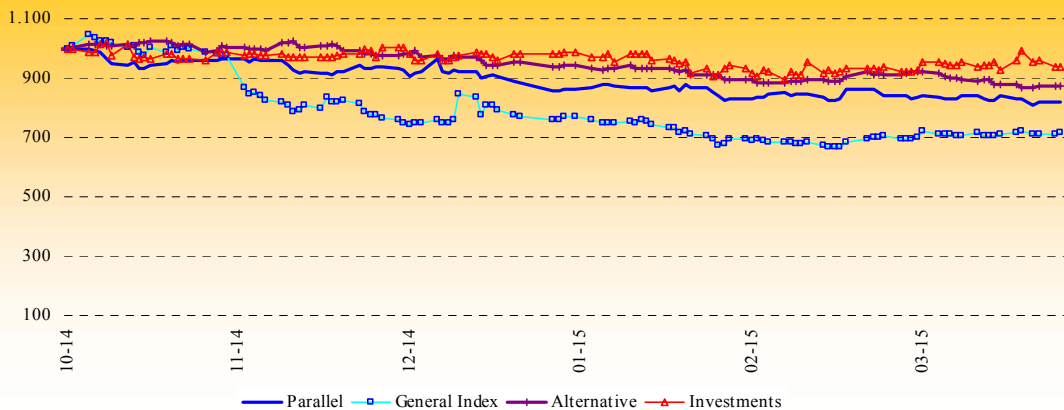
www.cse.com.cy, e-mail: info@cse.com.cy

For more information  
for the E.C.M. market  
you are addressed  
in the C.S.E

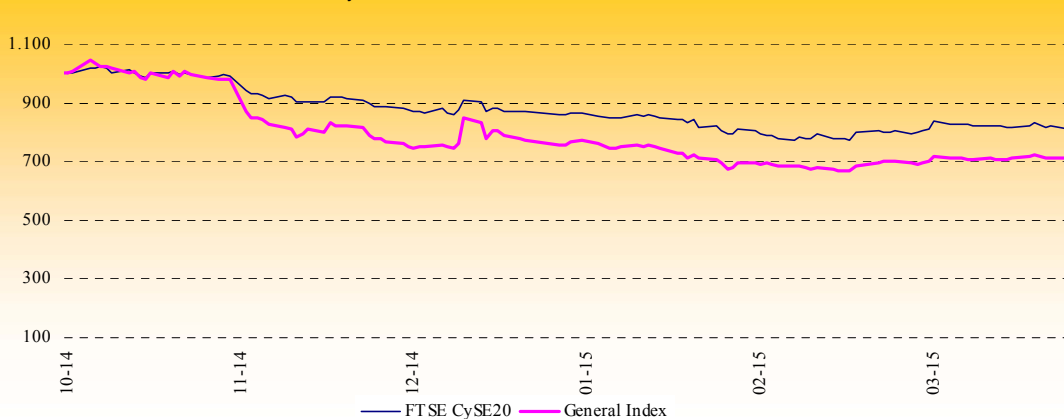
Volume vs CSE General Price Index from October 2014 to March 2015



CSE Market Indices Performance since October 2014



CSE General Index and FTSE/CySE 20 Performance since October 2014



## THE CSE'S FACTS AND FIGURES

This column  
presents the  
facts and figures  
for the month.



Market Statistics										
Market										
	Main	Shipping	Parallel	Alternative	Investment Companies	Corporate Bonds	Government Bonds	Special Category	Special Characteristics	Total
Listed Companies	5	0	9	39	8	1	0	30	6	98
Listed Securities	5	0	9	42	8	9	41	30	6	150
Turnover (€)	8.970.491	0	399.661	297.005	229.539	817.830	2.349.391	9.415	0	13.073.332
Securities traded	38.910.307	0	3.662.938	1.019.468	917.090	82.142.371	236.297.188	4.888.355	0	367.837.717
Trades	3.720	0	115	274	151	45	19	40	0	4.364

\*Warrants are included in the Market were the listed shares of the companies are traded

Trading Statistics							
Volume				Volume			
Month	Transactions	Securities Traded	(€)	Month	Transactions	Securities Traded	(€)
2/02/2015	147	6.195.796	323.121	2/03/2015	100	14.438.484	407.459
3/02/2015	406	9.640.383	675.535	3/03/2015	104	940.134	168.579
4/02/2015	467	8.423.425	962.403	4/03/2015	250	74.930.627	1.221.836
5/02/2015	427	7.669.700	792.311	5/03/2015	220	1.113.882	303.093
6/02/2015	179	3.719.850	546.827	6/03/2015	370	102.724.799	1.549.996
9/02/2015	195	2.306.914	305.701	9/03/2015	288	13.913.874	629.246
10/02/2015	263	5.223.341	470.666	10/03/2015	248	2.010.331	461.820
11/02/2015	155	2.345.022	236.653	11/03/2015	192	15.409.920	456.137
12/02/2015	132	2.242.836	147.222	12/03/2015	150	23.241.509	431.330
13/02/2015	227	16.226.261	527.593	13/03/2015	150	5.677.051	615.659
16/02/2015	152	4.768.025	201.493	16/03/2015	170	81.426.010	986.107
17/02/2015	157	1.122.861	197.295	17/03/2015	177	1.820.591	412.633
18/02/2015	155	1.499.010	201.236	18/03/2015	138	1.684.829	330.287
19/02/2015	119	2.627.581	338.965	19/03/2015	212	3.576.871	466.318
20/02/2015	214	8.989.739	1.232.883	20/03/2015	170	2.655.146	567.955
24/02/2015	541	87.392.172	1.936.442	23/03/2015	174	2.686.479	566.647
25/02/2015	242	5.549.494	597.963	24/03/2015	203	2.551.750	759.964
26/02/2015	178	12.711.738	2.455.008	26/03/2015	263	8.464.145	936.197
27/02/2015	271	233.488.983	2.850.219	27/03/2015	245	3.179.506	685.827
				30/03/2015	178	2.265.852	455.213
				31/03/2015	362	3.125.927	661.031
19	4.627	422.143.131	14.999.537	21	4.364	367.837.717	13.073.332
Monthly Average	244	22.218.060	789.449		208	17.516.082	622.540
Volume							
				Year	Transactions	Securities Traded	(€)
Yearly Average				2015	241	16.481.363	645.251



## THE CSE'S FACTS AND FIGURES

This column  
presents the  
facts and figures  
for the month.



CSE Indices							
	Closing	Yearly Highest		Yearly Lowest		Percentage Change	
	31/03/15					02/01/15	27/02/15
Market Indices (base 3.09.2004=1000)							
General Index	79,88	86,16	2/1/2015	74,53	19/2/2015	-7,29	1,77
Main Market Index	59,45	64,32	2/1/2015	54,2	28/1/2015	-7,57	2,96
Parallel Market Index	821,66	880,06	7/1/2015	810,92	26/3/2015	-5,00	-2,53
Alternative Market Index	695,92	750,66	12/1/2015	690,84	26/3/2015	-7,11	-4,28
Investment Companies Index	771,09	817,28	24/3/2015	738,93	9/2/2015	-5,01	-0,30
Sectoral Indices(base 3.09.2004=1000)							
Hotels	384,35	431,48	16/1/2015	384,35	31/3/2015	-10,60	-5,42
FTSE&CSE Indices							
FTSE CySE 20 (base 30.11.2000=1000)	46,35	49,32	2/1/2015	44,08	9/2/2015	-6,02	1,25
FTSE Med	5.780,69	5.780,69	31/3/2015	4.930,94	6/1/2015	14,97	8,78
Value of volume traded by sector							
Ecomonic Group*						Value of Volume (€)	Weight %
Financials						9.256.273	70,803
Consumer Services						186.389	1,426
Industrials						195.804	1,498
Consumer Goods						41.398	0,317
Telecommunications						0	0,000
Technology						64.588	0,494
Basic Materials						161.659	1,237
Corporate Bonds						817.830	6,256
Government Bonds						2.349.391	17,971
Total						13.073.332	100,000
* FTSE Industry Classification Benchmark – ICB.							
Ecomonic Group				Transactions	Securities Traded	Weight %	
Financials				3.776	40.316.059	10,96	
Consumer Services				374	6.740.900	1,83	
Industrials				47	273.220	0,07	
Consumer Goods				46	204.831	0,06	
Telecommunications				0	0	0,00	
Technology				54	105.984	0,03	
Basic Materials				3	1.757.164	0,48	
Corporate Bonds				45	82.142.371	22,33	
Government Bonds				19	236.297.188	64,24	
Total				4.364	367.837.717	100	



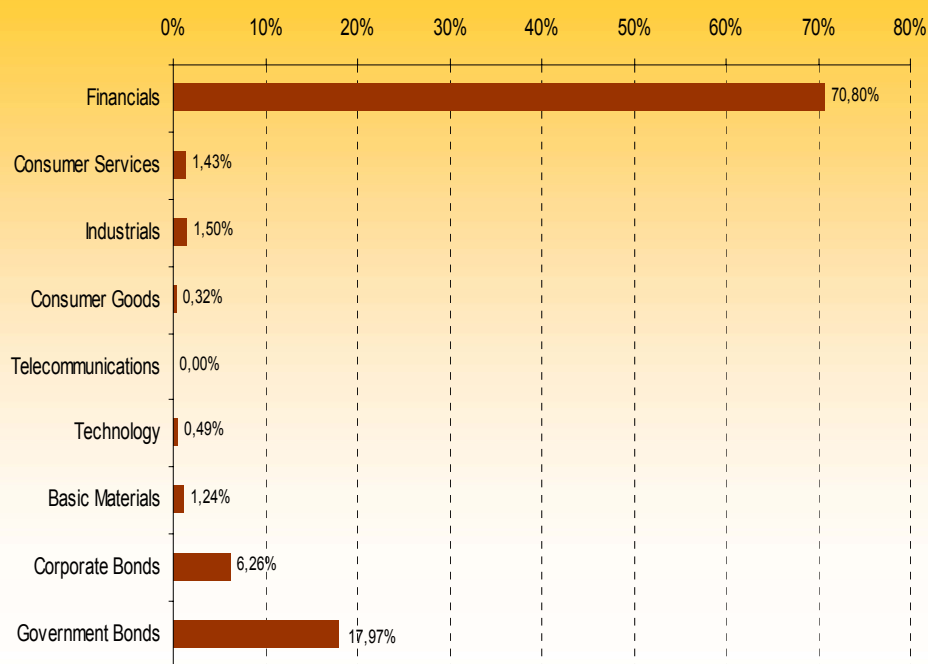
## THE CSE'S FACTS AND FIGURES

This column  
presents the  
facts and  
figures for the  
month.

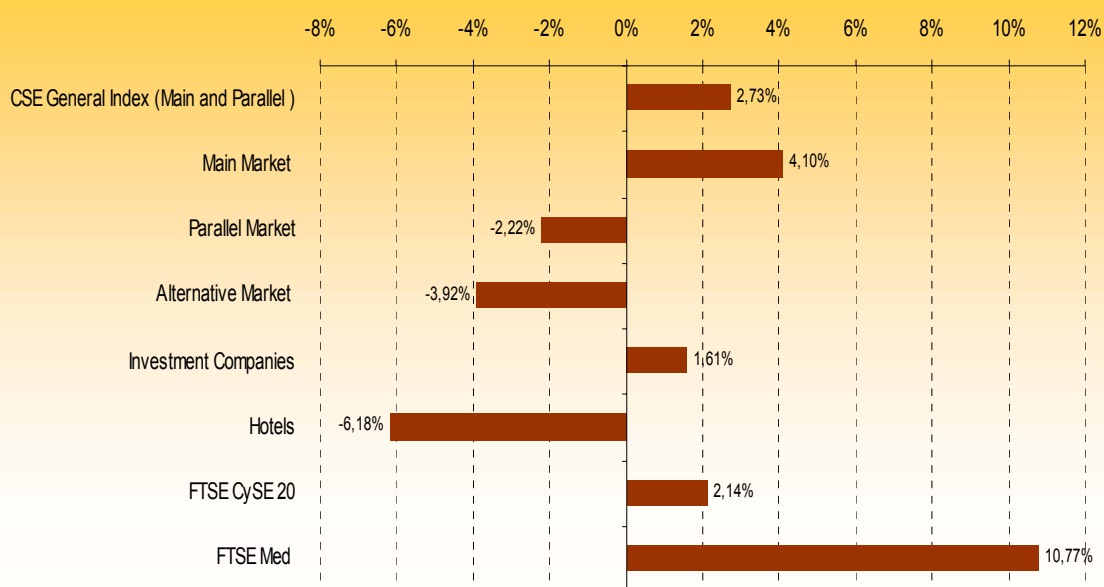




Economic Group Weighting to value traded during the month



Sectoral and special indices performance on the Cyprus Stock Exchange during the month



## THE CSE'S FACTS AND FIGURES

This column  
presents the  
facts and  
figures for the  
month.



## Market Capitalisation by Market

	27/02/15 (€)	31/03/15 (€)	% Δ	Weight* %
<b>Market</b>				
Main Market	2.203.730.578	2.258.093.024	2,47	27,77
Parallel Market	205.744.428	200.628.182	-2,49	2,47
Alternative Market	468.776.199	447.178.070	-4,61	5,50
Investment Companies Market	94.809.309	94.786.410	-0,02	1,17
Shipping Companies Market	0	0		0,00
Special Category Market	123.339.556	123.525.913	0,15	1,52
Special Characteristics Market	87.180.759	87.180.759	0,00	1,07
Shares (Excluding Investment Market)	3.088.771.520	3.116.605.948	0,90	38,33
Warrants	99.322	99.322,34	0,00	0,00
<b>Bonds Market</b>				
Corporate Bonds	1.191.910.470	1.191.082.183	-0,07	14,65
Government Bonds	3.761.943.049	3.728.596.714	-0,89	45,86
<b>Total</b>	<b>8.137.533.670</b>	<b>8.131.170.577</b>	<b>-0,08</b>	<b>100</b>

\*The weight is calculated to the total Market Capitalisation

## Shares with the largest market capitalisation at the end of the month

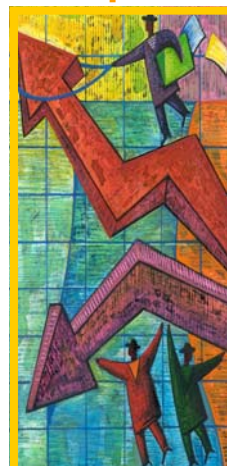
Company	Market Capitalisation (€)	Weight* %
1 BANK OF CYPRUS PUBLIC COMPANY LTD	1.820.280.685	56,68
2 HELLENIC BANK PUBLIC COMPANY LTD	366.147.440	11,40
3 PETROLINA (HOLDINGS) PUBLIC LTD	86.625.000	2,70
4 DEMETRA INVESTMENT PUBLIC LTD	70.200.000	2,19
5 VASSILICO CEMENT WORKS PUBLIC COMPANY LTD	68.339.150	2,13
6 THE CYPRUS CEMENT PUBLIC COMPANY LTD	55.044.353	1,71
7 USB BANK PLC	54.598.865	1,70
8 LOGICOM PUBLIC LTD	44.744.078	1,39
9 EMPIRE CAPITAL INVESTMENTS PUBLIC LTD	42.110.768	1,31
10 WOOLWORTH (CYPRUS) PROPERTIES PLC	41.264.588	1,28
<b>Όλικό Total</b>	<b>2.649.354.926</b>	<b>82,50</b>

\*The weight is calculated to the Market Capitalisation (Shares only, including Investment Companies Market)

## Market Capitalisation of Corporate Bonds

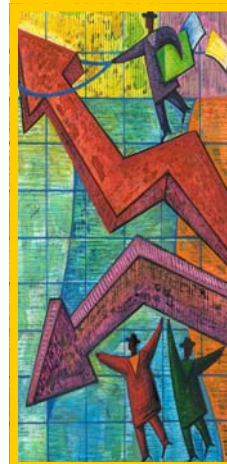
Corporate Bonds	Market Capitalisation (€)	Weight** %
1 BANK OF CYPRUS PUBLIC COMPANY LTD (GUARANTEED BONDS)	500.000.000	41,98
2 BANK OF CYPRUS PUBLIC COMPANY LTD (GUARANTEED BONDS)	500.000.000	41,98
3 ALPHA BANK CYPRUS LTD - BONDS 2013/2018	70.000.000	5,88
4 HELLENIC BANK PUBLIC COMPANY LTD - CONVERTIBLE CAPITAL SECURITIES 2	67.877.125	5,70
5 HELLENIC BANK PUBLIC COMPANY LTD - BONDS 2016	38.316.752	3,22
6 USB BANK PLC (BONDS 2009/ 2019)	7.440.000	0,62
7 AMATHUS PUBLIC LTD (GUARANTEED BONDS 2010-2015)	5.472.360	0,46
8 USB BANK PLC (CONVERTIBLE BONDS 2010/ 2020)	1.209.060	0,10
9 HELLENIC BANK PUBLIC COMPANY LTD - CONVERTIBLE CAPITAL SECURITIES 1	766.886	0,06
<b>Όλικό Total</b>	<b>1.191.082.183</b>	<b>100,00</b>

\*The weight is calculated to the Market Capitalisation of Corporate Bonds



## THE CSE'S FACTS AND FIGURES

This column  
presents the  
facts and figures  
for the month.

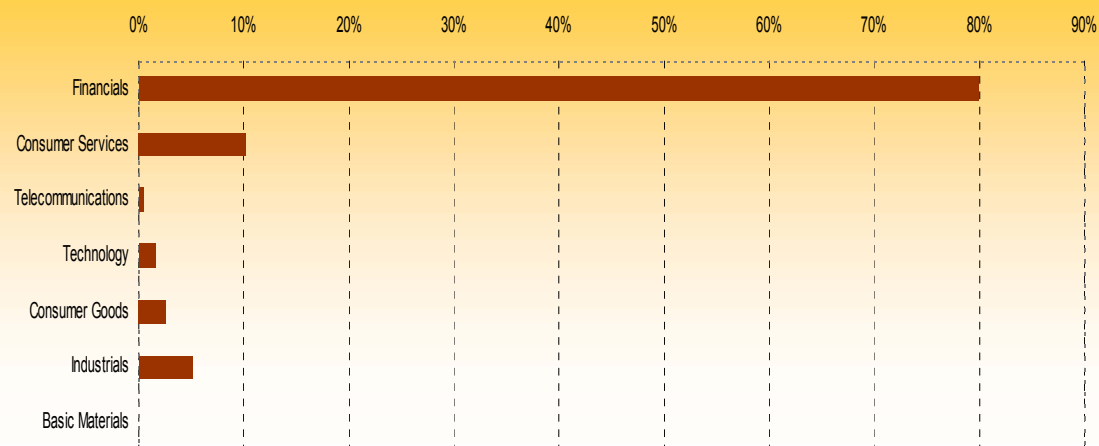


## Market Capitalisation per Economic Group

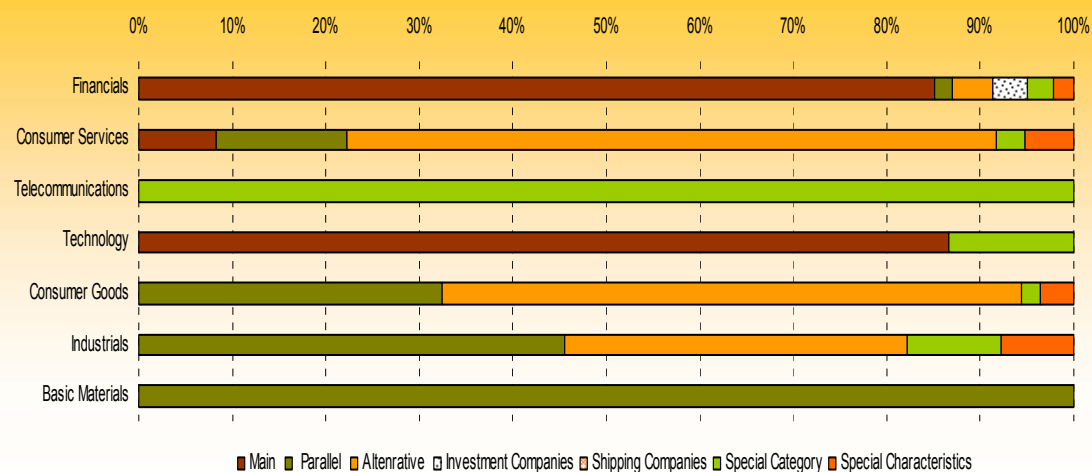
Economic Group*	Market							
	Main	Parallel	Alternative	Investment Companies	Shipping Companies	Special Category	Special Characteristics	%
	(€)	(€)	(€)	(€)	(€)	(€)	(€)	on Total
Basic Materials		4.272.554						0,13
Industrials		73.764.183	59.226.615			16.263.684	12.660.369	5,04
Consumer Goods		27.619.779	52.665.275			1.815.968	2.979.165	2,65
Technology	44.744.078					6.893.432		1,61
Telecommunications						14.532.707		0,45
Consumer Services	26.920.821	45.992.830	227.205.435			10.071.674	16.942.361	10,19
Financials	2.186.428.125	48.978.838	108.180.068	94.786.410		73.948.447	54.598.865	79,93
Total	2.258.093.024	200.628.182	447.277.392	94.786.410		123.525.913	87.180.759	100,00
%Market Capitalisation /Total Market Capitalisation (only shares)	70,31	6,25	13,93	2,95	0,00	3,85	2,71	

\*FTSE Industry Classification Benchmark – ICB.

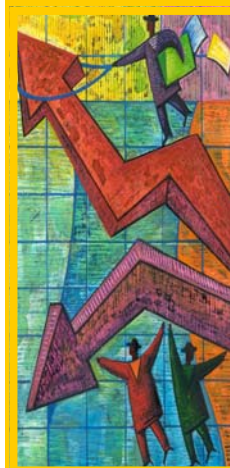
## Economic Group weighting of Market Capitalisation (shares-month end)



## Economic Group weighting of Market Capitalisation by Market (shares month end)

THE CSE'S  
FACTS AND  
FIGURES

This column  
presents the  
facts and figures  
for the month.



## Most traded shares (monthly basis)

Security	Market**	Value (€)	Weight %
1 BANK OF CYPRUS PUBLIC COMPANY LTD	MM	7,019,216	53,69
2 HELLENIC BANK PUBLIC COMPANY LTD	MM	1,817,888	13,91
3 LORDOS UNITED PLASTICS PUBLIC LTD	PM	161,659	1,24
4 VASSILICO CEMENT WORKS PUBLIC COMPANY LTD	PM	148,567	1,14
5 DEMETRA INVESTMENT PUBLIC LTD	IM	147,164	1,13
6 ATLANTIC INSURANCE COMPANY PUBLIC LTD	AM	108,840	0,83
7 THE CYPRUS CEMENT PUBLIC COMPANY LTD	AM	86,938	0,67
8 LOUIS PLC	MM	65,228	0,50
9 LOGICOM PUBLIC LTD	MM	64,588	0,49
10 KARYES INVESTMENT PUBLIC COMPANY LTD	IM	49,800	0,38

## Securities with best performance (1-month Performance)

Security	Market**	Transaction Price* (€)		% Δ
		Mar-15	Feb-15	
1 PHILOKTIMATI KI PUBLIC LTD	AM	0,101	0,217	114,85
2 RENOSHATZIOANNOU FARM PU LTD	AM	0,002	0,003	50,00
3 CLR INVESTMENT FUND PUBLIC LTD	MM	0,003	0,004	33,33
4 CPI HOLDINGS PUBLIC LTD	AM	0,216	0,270	25,00
5 SALAMISTOURS (HOLDINGS) LTD	AM	0,076	0,095	25,00
6 C.T.O PUBLIC COMPANY LTD	AM	0,022	0,024	9,09
7 INTERFUND INVESTMENTS PLC	AM	0,110	0,120	9,09
8 MINERVA INSURANCE COMPANY LTD	IM	0,024	0,026	8,33
9 THE CYPRUS CEMENT PUBL CO LTD	PM	0,380	0,400	5,26
10 WOOLWORTH CYPRUS PROPERT. PLC	AM	0,350	0,360	2,86

\* Last Trade of the Month

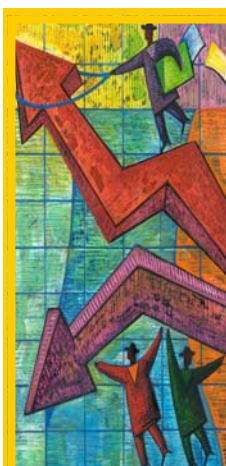
## Securities with worst performance (1-month Performance)

Security	Market**	Transaction Price* (€)		% Δ
		Mar-15	Feb-15	
1 CYPRUS TRADING CORPORATION PLC	MM	0,399	0,366	-8,27
2 A.L. PROCHOICE GROUP PUB LTD	MM	0,012	0,011	-8,33
3 COSMOS INSURANCE PUBLIC CO LTD	AM	0,074	0,067	-9,46
4 LAIKI CAPITAL PUBLIC CO LTD	PM	0,030	0,027	-10,00
5 LORDOS HOTELS (HOLDINGS) LTD	AM	0,350	0,309	-11,71
6 TOP KINISIS TRAVEL PUBLIC LTD	SM	0,270	0,237	-12,22
7 PANDORA INVESTMENT'S PUBLIC LTD	PM	0,055	0,045	-18,18
8 LEPTOS CALYPSO HOTELS LTD	SM	0,058	0,045	-22,41
9 VISION INTERNATIONAL GROUP LTD	AM	0,450	0,270	-40,00
10 SEA STAR CAPITAL PLC	SM	0,004	0,002	-50,00

\* Last Trade of the Month

\*\* MM=Main Market, PM=Parallel Market, AM=Alternative Market, SHM=Shipping Companies Market

IM=Investment Companies Market, SM=Special Category, SCM=Special Characteristics



## THE CSE'S FACTS AND FIGURES

This column  
presents the  
facts and figures  
for the month.



Market Shares							
Selected Period: 02/03/2015 - 31/03/2015							
Rank	Member Code	Members of the Cyprus Stock Exchange	Value of Equities (€)	Daily Average value of Equities (€)	Market Share (%)	Value of Bonds (€)	Notes
1	MF	MEGA EQUITY SECURITIES & FINANCIAL SERVICES PUBLIC LTD	4.179.624	134.827	21,10	0	0
2	CI	CYPRUS INVESTMENT AND SECURITIES CORPORATION LTD	3.581.835	115.543	18,08	37	0
3	NS	NBG SECURITIES S.A.	2.129.306	68.687	10,75	0	1
4	PC	PROCHOICE SECURITIES LTD	1.624.266	52.396	8,20	1.139.541	0
5	EB	EUROBANK EQUITIES INVESTMENT FIRM S.A.	1.421.646	45.860	7,18	729.200	1
6	EL	HELLENIC BANK (INVESTMENTS) LTD	1.204.255	38.847	6,08	32.235	0
7	AR	ARGUS STOCKBROKERS LTD	1.128.783	36.412	5,70	1.748.589	1
8	CL	LAIKI FINANCIAL SERVICES LTD	1.098.596	35.439	5,55	64.010	0
9	AL	ATLANTIC SECURITIES LTD	941.368	30.367	4,75	1.608.602	0
10	AV	AXIA VENTURES GROUP LTD	686.230	22.136	3,46	0	0
11	IB	INVESTMENT BANK OF GREECE S.A.	654.012	21.097	3,30	0	1
12	AF	ALPHA FINANCE INVESTMENT SERVICES S.A.	395.934	12.772	2,00	0	1
13	EX	EUROXX SECURITIES S.A.	221.464	7.144	1,12	0	1
14	MK	MERITKAPITAL LIMITED	215.141	6.940	1,09	1.012.227	0
15	GC	GLOBAL CAPITAL SECURITIES AND FINANCIAL SERVICES LTD	173.534	5.598	0,88	0	0
16	SS	SHARELINK SECURITIES AND FINANCIAL SERVICES LTD	149.988	4.838	0,76	0	0
17	SI	PIRAEUS SECURITIES S.A.	3.498	113	0,02	0	0
18	BT	BETA SECURITIES S.A.	2.742	88	0,01	0	0
Total			19.812.222	639.104	100,0	6.334.442	

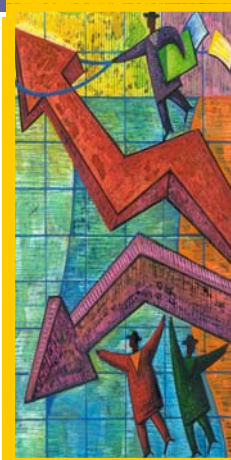
**Notes:**

1. Members of the Athens Exchange acting as Remote Members of the Cyprus Stock Exchange



### THE CSE'S FACTS AND FIGURES

This column  
presents the  
facts and figures  
for the month.





## Central Registry-Depository Statistics

### Investors Accounts

Selected Period: 02/03/2015 - 31/03/2015

Month	Number of new (Opened) Investors Accounts
2015-03	412

### Active Investors Shares Mobility

Selected Period: 02/03/2015 - 31/03/2015

Month	Total of Active Investor Shares	Daily average of active Investors Shares	Active Investors Shares Shares mobility
2015-03	951	109	2,40

#### Notes:

1. Active investor accounts indicate the number of investors who have purchased equities or Debt in the CSE at least once for the relevant period of time.
2. Daily average is the daily active investor accounts for the relevant period of time.
3. Mobility of active investor accounts indicate the average number of days during which an investor purchased equities in the CSE at least once.

### Foreign Investors participation to the Market Capitalisation - (month-end)

Investors Category	Market Capitalisation %
Foreign Investors	36,90

### Investors shares allocation with positive balance based on the number of securities (month-end)

Securities	Investors shares	
	Number	%
1	181.626	70,87
2-5	64.563	25,19
6-10	8.259	3,22
>10	1.817	0,71
<b>Total</b>	<b>256.265</b>	<b>100,00</b>



### THE CSE'S FACTS AND FIGURES

This column  
presents the  
facts and figures  
for the month.



**Investors' Geographical Allocation In Cyprus (month-end)**

<b>Districts</b>	<b>Investor Share Account</b>	
	Number	%
Lefkosia	98.453	42,42
Lemesos	63.341	27,29
Larnaca	33.046	14,24
Pafos	23.592	10,17
Ammochostos	13.646	5,88
Total	232.078	100,00

**Notes:**

1. Active Investor Share Accounts with positive balance are those in which at least one security is credited.
2. The geographical allocation of Investor Share Accounts is based upon the administrative segmentation of Cyprus in districts (the occupied areas are excluded).
3. The above classification concerns Investor Share Accounts belonging to investors who declare Cyprus as their permanent home country, and is based on the postal codes declared in the Investor Share Accounts.

**Foreign Investors' Geographical Allocation (month-end)**

<b>Countries</b>	<b>Investor Share Account</b>	
	Number	%
Greece	5.096	32,13
Russian Federation	3.500	22,07
United Kingdom	2.027	12,78
Ukraine	551	3,47
United States	447	2,82
Australia	305	1,92
South Africa	397	2,50
Belarus	125	0,79
Kazakhstan	109	0,69
Bulgary	111	0,70
Beliz	240	1,51
Canadas	170	1,07
Germany	123	0,78
Israel	147	0,93
Seychelles	192	1,21
British Virgin Islands	887	5,59
Other Countries	1.432	9,03
Total	15.859	100,00

**Notes:**

1. The above classification concerns "Investor Share Accounts" who declare another Country (other than Cyprus) as their permanent home country.
2. The countries that have been selected have a percentage of the Investor Share Accounts above 1%.

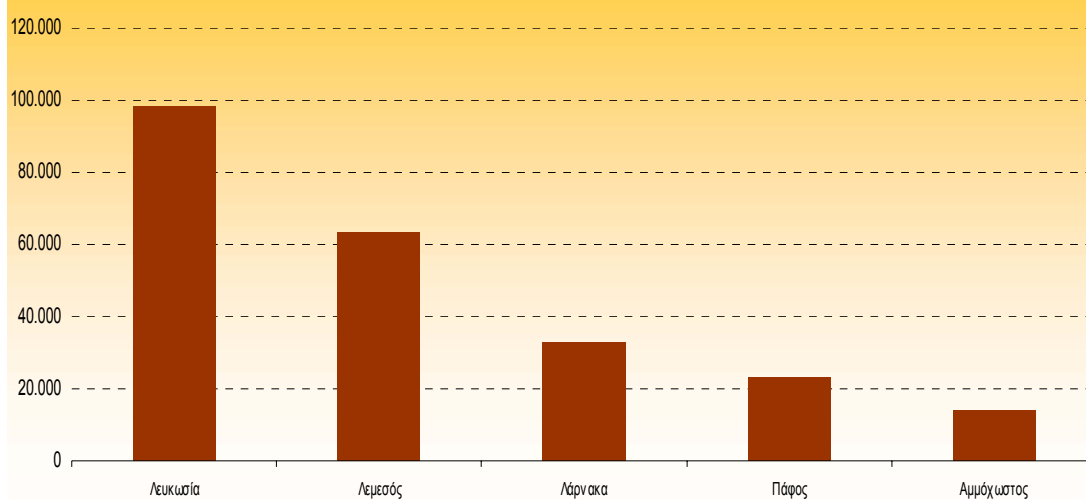


## THE CSE'S FACTS AND FIGURES

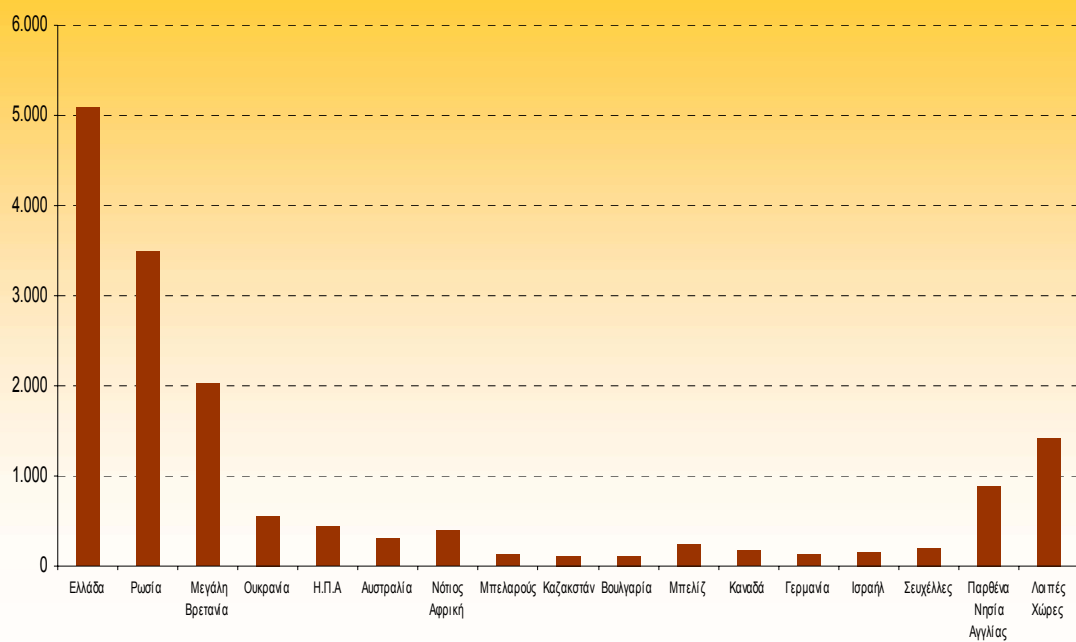
This column  
presents the  
facts and figures  
for the month.



Γεωγραφική Κατανομή Κυπρίων Επενδυτών



Γεωγραφική Κατανομή Αλλοδαπών Επενδυτών



### THE CSE'S FACTS AND FIGURES

This column presents the facts and figures for the month.



## Clearing transactions value of CSE Clearing Members

Selected Period: 02/03/2015 - 31/03/2015

(Share &amp; Bond Markets)

Member Name	Member Code	Clearing Account	Clearing Transactions Value	% Clearing Value
LAIKI FINANCIAL SERVICES LTD	1000000010	Main Share	1.162.606,52	4,45
SHARELINK SEC. & FIN. SER. LTD	1000000023	Main Share	149.988,00	0,57
HELLENIC BANK (INVESTMENTS) LTD	1000000025	Main Share	1.236.490,11	4,73
CISCO LTD	1000000026	Main Share	3.581.871,75	13,70
GLOBAL CAP. SEC. & FIN. SERV. LTD	1000000030	Main Share	173.534,36	0,66
MEGA - EQUITY SEC. & FINANCIAL SERV. PUBLIC LTD	1000000038	Main Share	4.179.623,85	15,99
ARGUS STOCKBROKERS LTD	1000000047	Main Share	2.877.372,87	11,00
ATLANTIC SECURITIES LTD	1000000063	Main Share	2.549.970,07	9,75
ALFA FINANCE INVESTMENT SERVICES S.A	1000000067	Main Share	395.933,65	1,51
BETA A.X.E.I.E.Y.	1000000068	Main Share	2.741,70	0,01
NATIONAL SECURITIES S.A	1000000070	Main Share	2.129.306,11	8,14
EUROBANK EFG EQUITIES INVESTMENT FIRM S.A	1000000071	Main Share	2.150.845,97	8,23
INVESTMENT BANK OF GREECE S.A	1000000072	Main Share	654.012,36	2,50
EUROXX SECURITIES S.A	1000000073	Main Share	221.463,53	0,85
ΠΕΙΡΑΙΩΣ Α.Ε.Π.Ε.Υ.	1000000077	Main Share	3.498,44	0,01
AXIA VENTURES GROUP LTD	1000000081	Main Share	686.230,18	2,62
PROCHOICE SECURITIES LTD	1000000082	Main Share	2.763.807,00	10,57
SOLIDUS SECURITIES A.E.P.E.Y	1000000083	Main Share	0,00	0,00
BNP PARIBAS SECURITIES SERVICES	5000000001	Main Share	0,00	0,00
CITIBANK INTERNATIONAL PLC GREECE BRANCH	5000000002	Main Share	0,00	0,00
ΤΡΑΠΕΖΑ ΕΦΓ EUROBANK ΕΡΓΑΣΙΑΣ ΑΕ	5000000003	Main Share	0,00	0,00
PIRAEUS BANK S.A	5000000008	Main Share	0,00	0,00
HELLENIC BANK PUBLIC COMPANY LTD	5000000013	Main Share	0,00	0,00
HSBC BANK PLC SECURITIES SERVICES ATHENS	5000000016	Main Share	0,00	0,00
MERITKAPITAL LIMITED	5000000019	Main Share	1.227.367,78	4,69
Total			26.146.664,25	100,00



### THE CSE'S FACTS AND FIGURES

This column  
presents the  
facts and figures  
for the month.

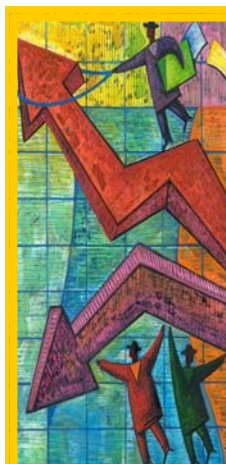


## Settlement Transactions Value of CSE Custodians

Selected Period: 02/03/2015 - 31/03/2015

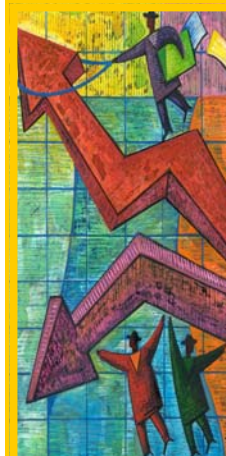
(Share &amp; Bond Markets)

Member Name	Member Code	Settlement Value (€)	% Settlement Value
LAIKI FINANCIAL SERVICES LTD	1000000010	1.162.606,52	4,45
SHARELINK SEC. & FIN. SER. LTD	1000000023	147.709,71	0,56
HELLENIC BANK (INVESTMENTS) LTD	1000000025	980.350,79	3,75
CISCO LTD	1000000026	3.581.871,75	13,70
GLOBAL CAP. SEC. FIN. SERV. LTD	1000000030	173.534,36	0,66
MEGA - EQUITY SEC. & FINANCIAL SERV. PUBLIC LTD	1000000038	4.179.623,85	15,99
ARGUS STOCKBROKERS LTD	1000000047	2.719.365,26	10,40
ATLANTIC SECURITIES LTD	1000000063	2.549.970,07	9,75
ALFA FINANCE INVESTMENT SERVICES S.A	1000000067	6.678,39	0,03
BETA A.X.E.I.E.Y.	1000000068	2.741,70	0,01
NATIONAL SECURITIES S.A	1000000070	59.236,62	0,23
EUROBANK EFG EQUITIES INVESTMENT FIRM S.A	1000000071	1.031.965,30	3,95
INVESTMENT BANK OF GREECE S.A.	1000000072	0,00	0,00
EUROXX SECURITIES S.A	1000000073	135,62	0,00
ΠΕΙΡΑΙΩΣ Α.Ε.Π.Ε.Υ.	1000000077	546,00	0,00
AXIA VENTURES GROUP LTD	1000000081	37.511,54	0,14
PROCHOICE SECURITIES LTD	1000000082	1.630.629,99	6,24
SOLIDUS SECURITIES A.E.P.E.Y	1000000083	0,00	0,00
BNP PARIBAS SECURITIES SERVICES	5000000001	3.153.870,31	12,06
CITIBANK INTERNATIONAL PLC	5000000002	1.984.794,55	7,59
EFG EUROBANK ERGASIAS S.A	5000000003	1.029.012,83	3,94
EFG EUROBANK ERGASIAS S.A (institutional investors)	5000000004	43.580,15	0,17
PIRAEUS BANK S.A	5000000008	2.952,44	0,01
HELLENIC BANK PUBLIC COMPANY LTD	5000000013	416.425,40	1,59
HSBC BANK PLC SECURITIES SERVICES	5000000016	24.183,49	0,09
MERITKAPITAL LIMITED	5000000019	1.227.367,78	4,69
Total		26.146.664,42	100,00



### THE CSE'S FACTS AND FIGURES

This column  
presents the  
facts and figures  
for the month.





# briefing from the CSE

## History

The Cyprus Stock Exchange started operations as a legal entity on March 29 1996, based on the Laws and Regulations concerning the Cyprus Stock Exchange, which were enacted by the House of Representatives, Parliament of the Republic of Cyprus in 1993 and 1995 respectively.

The Cyprus Stock Exchange is an organized securities market through which transactions on listed securities take place, such as government bonds, warrants, stocks or any other securities that are listed on the stock exchange.

The main participants in the market are the Members of the stock exchange (stock brokerage companies), custodians, issuers, as well as investors. The CSE is managed by its Board, which is appointed by the government of the Republic of Cyprus.

The stock exchange offers a complete spectrum of products and services:

→ Listing of Securities

- Shares
- Bonds (Corporate Bonds, Government Bonds and Treasury Bills)
- Rights
- Warrants
- Share of Undertakings for Collective Investment in Transferable Securities (UCITS)

→ Trading of securities

→ Clearing and Settlement of Transactions

## Vision and Mission

The Board of the Cyprus Stock Exchange, within the framework of its Strategic Plan, has as a vision the development of the CSE as one of the leading stock exchanges in the geographical region of Cyprus, as well as a leading stock exchange in specialized areas of activity.

In addition, the Cyprus Stock Exchange aims to establish itself as the basic vehicle of raising capital in the Cypriot market from companies in specific areas, and also enjoy the trust of the investors.



Regulated by the  
Cyprus Securities and Exchange  
Commission

71-73 Lordou Vironos Avenue,  
1096 Nicosia

P.O. Box 25427,  
1309 Nicosia, CYPRUS

TEL +357-22-712300

FAX +357-22-570308

E-mail: [info@cse.com.cy](mailto:info@cse.com.cy)

[www.cse.com.cy](http://www.cse.com.cy)

**The Chairman, the Council, the  
Management and the staff of  
the Cyprus Stock Exchange wish  
you a Happy Easter**



**ΧΡΗΜΑΤΙΣΤΗΡΙΟ ΑΞΙΩΝ ΚΥΠΡΟΥ**  
**CYPRUS STOCK EXCHANGE**